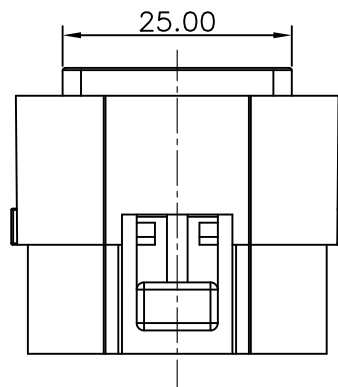
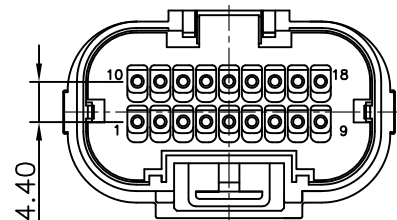
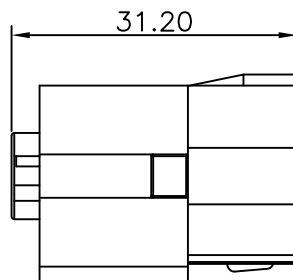
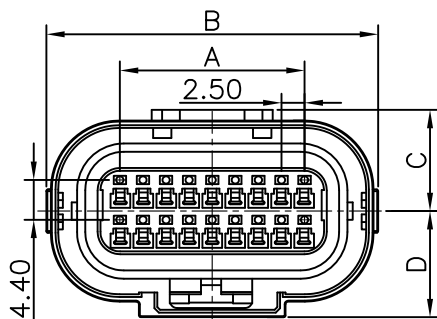
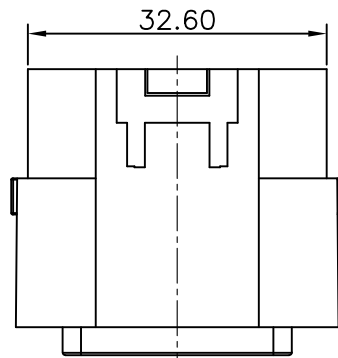


**RoHS**  
COMPLIANT



**SPECIFICATIONS**

1. Current rating: 3A AC, DC
2. Temperature range: -40°C ~ +125°C
3. Insulation resistance: 100MΩ min.
4. Withstanding voltage: 1000V AC/ minute.
5. Contact resistance: 5mΩ max.

**Material:**

- Insulator: Glass filled PBT(Black)
- Rear Cover: Glass filled PBT(Gray)
- Seal Ring: Silicone rubber(Blue)
- Grommet: Silicone rubber(Blue)

H255602\*\* 05 01A

209=2X9P  
217=2X17P

Pin No.	Dimensions			
	A	B	C	D
2X9	20.00	36.60	11.00	11.20
2X13	30.00	46.60	11.00	11.20
2X17	40.00	56.60	11.00	11.20

△A03			
△A02			
△A01			
MARK	REVISION DESCRIPTION	SIGNATURE	DATE
1			

TOLERANCE		TITLE:	
X.X	±0.30	Pitch 2.5	
X.XX	±0.20	Socket Housing	
X.XXX	±0.10		
Angle ±2°		UNIT:mm	SCALE:N/A

DRAWN:	LCC 2024.07.29
CHECKED:	
APPROVED:	
SHEET: 1/1	PROJECTION

DRAWN: <b>KONNRA</b> 东莞市康瑞电子有限公司	
DongGuan Konnra Electronics Co.,Ltd.	
PART NO.: H255602**0501A	
REV.: A01	DRAWING NO.: 2556H201-A-S



**RoHS**  
COMPLIANT

**SPECIFICATIONS**

1. Current rating: 3A AC, DC
2. Temperature range: -40°C ~ +125°C
3. Insulation resistance: 100MΩ min.
4. Withstanding voltage: 1000V AC/ minute.
5. Contact resistance: 5mΩ max.

Material:

Insulator: Glass filled PBT(Black)

Contact: Copper alloy/Tin plating

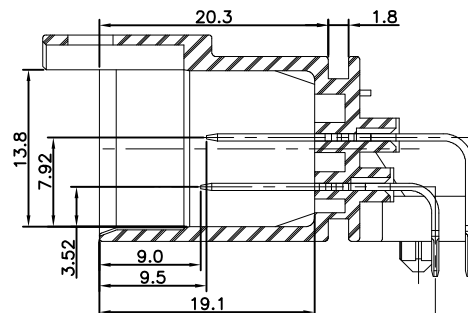
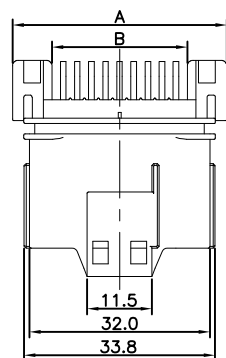
C2556RD2\*\*05T0101BA

209=2X9P

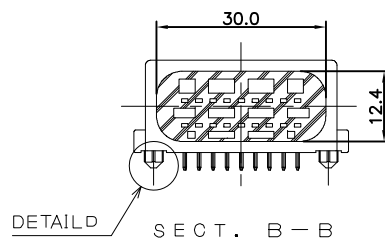
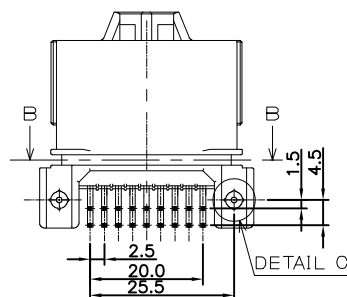
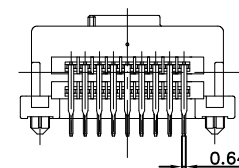
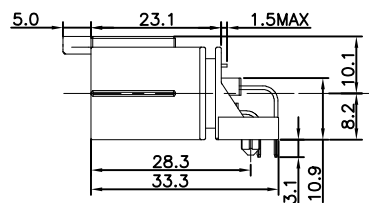
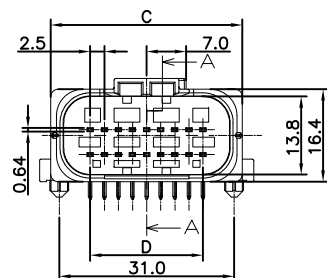
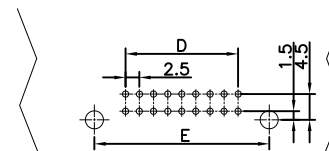
217=2X17P

Recommended P.C.B. Layout

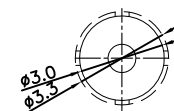
Pin No.	Dimensions				
	A	B	C	D	E
2X9	38.0	24.0	34.0	20.0	31.0
2X13	48.0	34.0	44.0	30.0	41.0
2X17	58.0	44.0	54.0	40.0	51.0



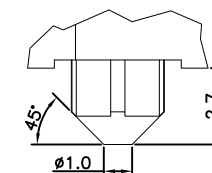
SECT. A - A  
(SCALE 2 : 1)



SECT. B - B



DETAIL C  
(SCALE 5 : 1)



DETAIL D  
(SCALE 5 : 1)

A03

A02

A01

MARK

REVISION DESCRIPTION

SIGNATURE

DATE

TOLERANCE

X.X ±0.30  
X.XX ±0.20  
X.XXX ±0.10  
Angle ±2°

TITLE:  
Pitch 2.5  
Pin Connector

UNIT:mm SCALE:N/A

DRAWN: LCC 2024.07.25

CHECKED:

APPROVED:

SHEET:1/1

PROJECTION

**KONNRA** 东莞市康瑞电子有限公司  
DongGuan Konnra Electronics Co.,Ltd.

PART NO.:C2556RD2\*\*05T0101BA

REV.:A01 DRAWING NO.:2556WFRD201-A-S

1

2

3

4

5

6

7

8

9