

RoHS
COMPLIANT

SPECIFICATIONS

1. Current rating: 3A AC, DC
2. Temperature range: -40°C ~ +125°C
3. Insulation resistance: 100MΩ min.
4. Withstanding voltage: 1000V AC/ minute.
5. Contact resistance: 5mΩ max.

Material:

Insulator: Glass filled PBT(Black)

Contact: Copper alloy/Tin plating

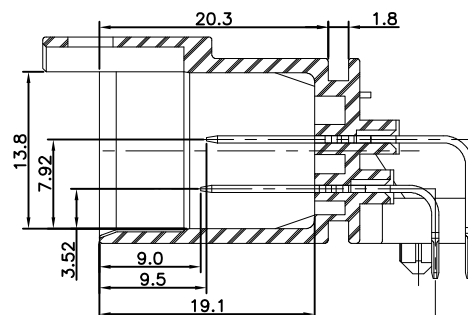
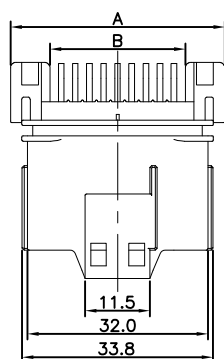
C2556RD2**05T0101BA

209=2X9P

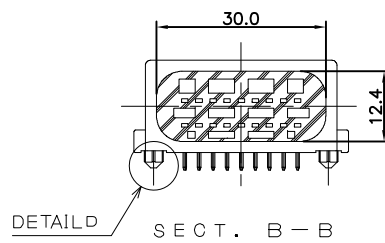
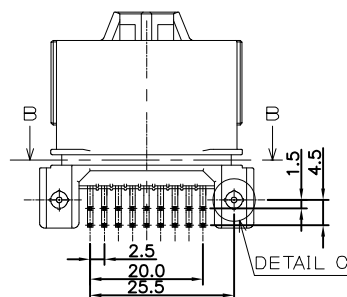
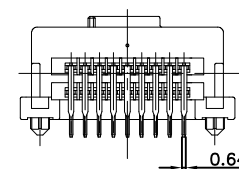
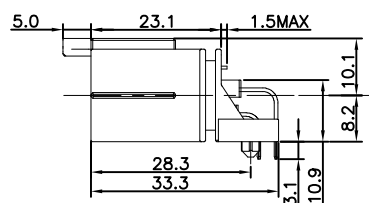
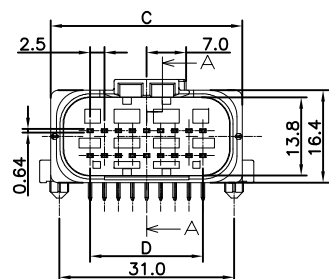
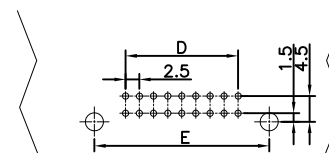
217=2X17P

Recommended P.C.B. Layout

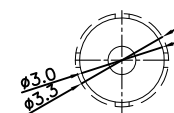
Pin No.	Dimensions				
	A	B	C	D	E
2X9	38.0	24.0	34.0	20.0	31.0
2X13	48.0	34.0	44.0	30.0	41.0
2X17	58.0	44.0	54.0	40.0	51.0



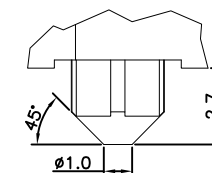
SECT. A-A
(SCALE 2:1)



SECT. B-B



DETAIL C
(SCALE 5:1)



DETAIL D
(SCALE 5:1)

A03

A02

A01

MARK

REVISION DESCRIPTION

SIGNATURE

DATE

TOLERANCE

X.X ±0.30

X.XX ±0.20

X.XXX ±0.10

Angle ±2°

TITLE:
Pitch 2.5
Pin Connector

UNIT:mm

SCALE:N/A

DRAWN: LCC 2024.07.25

CHECKED:

APPROVED:

SHEET:1/1

PROJECTION

KONNRA 东莞市康瑞电子有限公司
DongGuan Konnra Electronics Co.,Ltd.

PART NO.:C2556RD2**05T0101BA

REV.:A01 DRAWING NO.:2556WFRD201-A-S

1

2

3

4

5

6

7

8

9