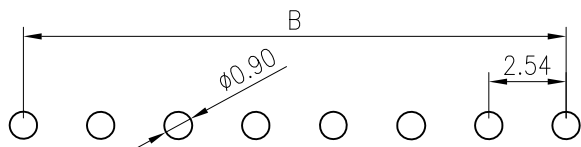
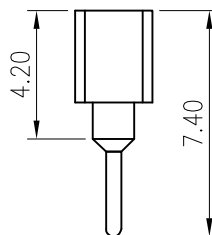
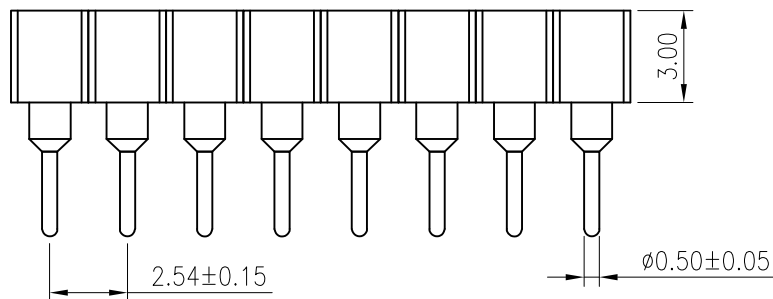
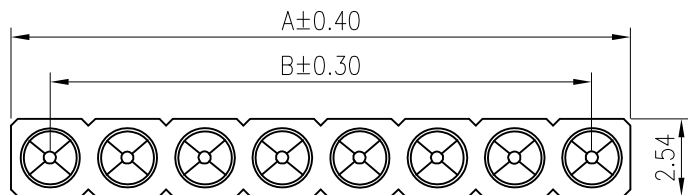


**RoHS**  
COMPLIANT



Recommended P.C.B. Layout  
Total tolerance:±0.05mm

**SPECIFICATIONS**

1. Current rating: 3A AC, DC
2. Voltage rating: 125V AC,DC
3. Temperature range: -40°C ~ +105°C
4. Insulation resistance: 1000MΩ/ min.
5. Withstanding voltage: 500V AC/ minute.
6. Contact resistance: 20mΩ/ max.

Material:

PIN (outer sleeve) : C3604

Clip(contact 4 finger): C17200

Plating(outer sleeve):

Tin Plated:30u" NI Min,OVER 80u" SnMin

Gold Plated:30u"Ni Min,OVER gold flash(Au0.5u")

Insulation Material: PPS UL94V-0, BLACK

Mechanical

Average Insertion force with steel pin of Ø0.43mm/0.17":<250g

Average withdrawal force with steel pin of Ø0.43mm/0.17":>20g min.

Mechanical life cycle:min,200

KR2542 series pin header

Ordering Code: C2542FD1\*\*51B0102PH

102=2P

140=40P

A=2.54xCircuits

B=A-2.54

|             |
|-------------|
| TOLERANCE   |
| X.X ±0.30   |
| X.XX ±0.20  |
| X.XXX ±0.10 |
| Angle ±2°   |

TITLE:  
DP2.54 DIP 180° 圆  
孔排母 H3.0 L7.4

DRAWN: *ZS 2024.1.12*  
CHECKED:  
APPROVED:

**KONNRA** 东莞市康瑞电子有限公司  
DongGuan Konnra Electronics Co.,Ltd.  
PART NO.:C2542FD1\*\*51B0102PH

|      |                      |           |      |         |           |           |            |          |                            |
|------|----------------------|-----------|------|---------|-----------|-----------|------------|----------|----------------------------|
| MARK | REVISION DESCRIPTION | SIGNATURE | DATE | UNIT:mm | SCALE:N/A | SHEET:1/1 | PROJECTION | REV.:A01 | DRAWING NO.:2542WFD102-H-S |
|------|----------------------|-----------|------|---------|-----------|-----------|------------|----------|----------------------------|