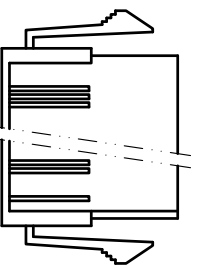
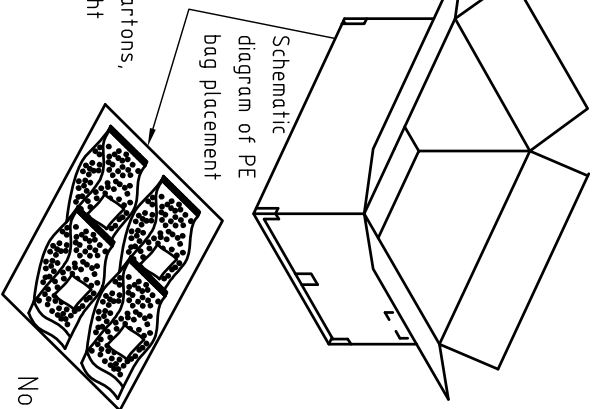


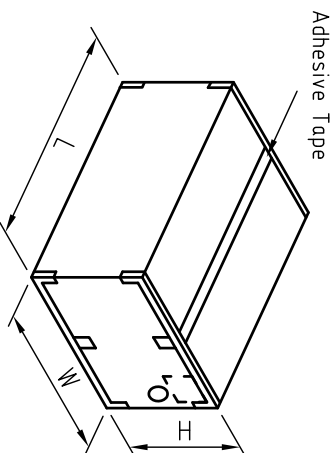
Step 1: Place Housing into PE bag and seal PE bag. Label.
将 Housing 放入 PE 袋内, 并将 PE 袋封好, 贴上标签。



Step 2: Put PE bag packed products in cartons.
Packing detail see the table right
将装好产品的 PE 袋放入纸箱内, 详细包装见右表



Step 3: Put PE bag packed products in cartons.
Packing detail see the table right
将装好产品的 PE 袋放入纸箱内, 详细包装见右表



Circuits	PCS/Bag
2	1000
3	1000
4	1000
5	1000

	SPEC.	Remark
Carton 1	L460mm×W460mm×H510mm	Use the appropriate carton size according to the actual order quantity 根据实际订单数量使用合适的纸箱尺寸
Carton 2	L500mm×W500mm×H305mm	
Carton 3	L580mm×W580mm×H320mm	

Note 注解:

- There shall be no dirt such as deformation phenomenon, Mantissa box fillers must be used
每箱不可有脏污, 变形现象, 尾数箱必须用填充物
- Confirm whether the inner and outer labels are missing and the content must be consistent with the actual product
确认内外标签有无缺失, 内容与实物必须一致
- Packing quantity per carton depends on order and delivery quantity
每箱包装数量依订单及交货数量而定

TOLERANCE

X.X	±0.30
X.XX	±0.20
X.XXX	±0.10
Angle	±2°

DRAWN: *Arwin 2020.03.05*

CHECKED:

APPROVED:

KONNIRA 东莞市康瑞电子有限公司
Dongguan Konnira Electronics Co., Ltd.

PART NO.: H4200F****01A

F

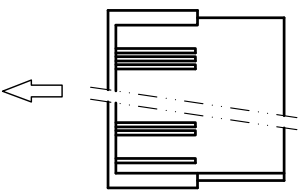
F

MARK	REVISION DESCRIPTION	SIGNATURE	DATE	UNIT: mm	SCALE: N/A	SHEET: 1/1	PROJECTION	REV.: A1	DRAWING NO.: 4200HF101-A-P
1	2	3	4	5	6	7	8	9	

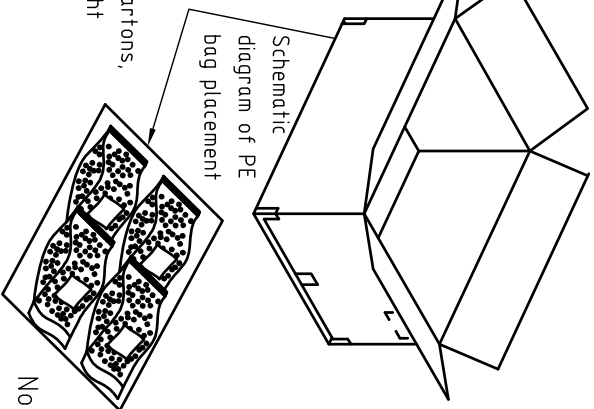
F

F

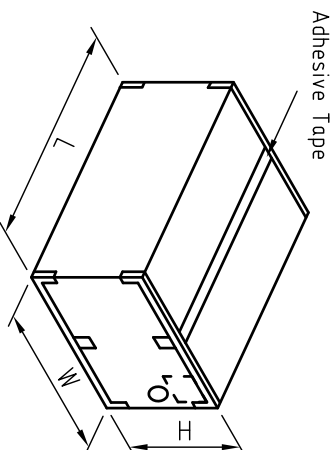
Step 1: Place Housing into PE bag and seal PE bag. Label.
将 Housing 放入 PE 袋内, 并将 PE 袋封好, 贴上标签。



Step 2: Put PE bag packed products in cartons.
Packing detail see the table right
将装好产品的 PE 袋放入纸箱内, 详细包装见右表



Step 3: Put PE bag packed products in cartons.
Packing detail see the table right
将装好产品的 PE 袋放入纸箱内, 详细包装见右表



Circuits	PCS/Bag
2	1000
3	1000
4	1000
5	1000

	SPEC.	Remark
Carton 1	L460mm×W460mm×H510mm	Use the appropriate carton size according to the actual order quantity 根据实际订单数量使用合适的纸箱尺寸
Carton 2	L500mm×W500mm×H305mm	
Carton 3	L580mm×W580mm×H320mm	

Note:

- There shall be no dirt such as deformation phenomenon, Mantissa box fillers must be used
每箱不可有脏污, 变形现象, 尾数箱必须用填充物
- Confirm whether the inner and outer labels are missing and the content must be consistent with the actual product
确认内外标签有无缺失, 内容与实物必须一致
- Packing quantity per carton depends on order and delivery quantity
每箱包装数量依订单及交货数量而定

TOLERANCE

X.X	±0.30
X.XX	±0.20
X.XXX	±0.10
Angle	±2°

DRAWN: *Arwin 2020.03.05*

CHECKED:

APPROVED:

KONNIRA 东莞市康瑞电子有限公司
Dongguan Konnira Electronics Co., Ltd.

PART NO.: H4200F****02A

F

F



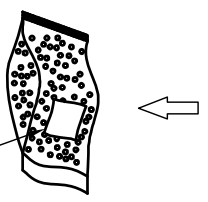
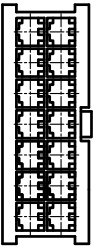
MARK

1	2	3	4	5	6	7	8	9
REVISION DESCRIPTION	SIGNATURE	DATE	UNIT: mm	SCALE: N/A	SHEET: 1/1	PROJECTION	REV.: A1	DRAWING NO.: 4200HF102-A-P

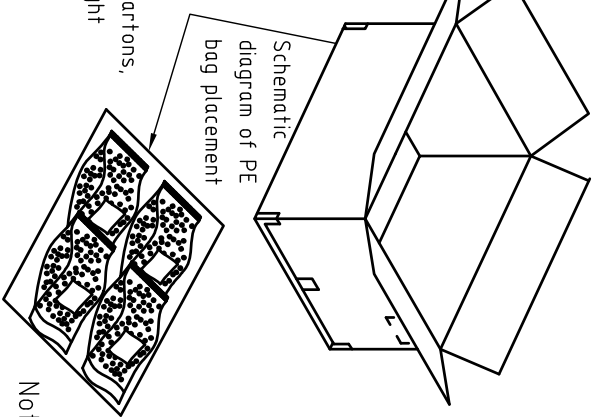
F

F

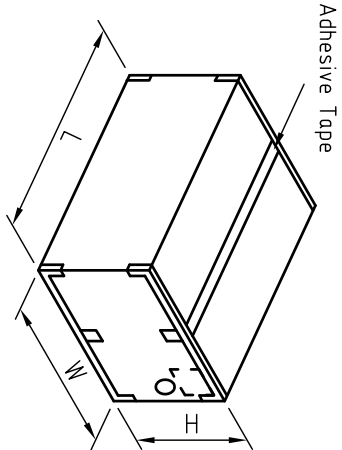
Step 1: Place Housing into PE bag and seal PE bag. Label.
将 Housing放入PE袋内, 并将PE袋封好, 贴上标签。



Step 2: Put PE bag packed products in cartons.
Packing detail see the table right
将装好产品的PE袋放入纸箱内, 详细包装见右表



Step 3: Put PE bag packed products in cartons.
Packing detail see the table right
将装好产品的PE袋放入纸箱内, 详细包装见右表



Circuits	PCS/Bag
2×2	1000
2×3	1000
2×4	500
2×5	500
2×6	500
2×7	500
2×8	500
2×9	500
2×10	250
2×11	250
2×12	250

	SPEC.	Remark
Carton 1	L460mm×W460mm×H510mm	Use the appropriate carton size according to the actual order quantity 根据实际订单数量使用合适的纸箱尺寸
Carton 2	L500mm×W500mm×H305mm	
Carton 3	L580mm×W580mm×H320mm	

- Note: 注解:
- There shall be no dirt such as deformation phenomenon, Mantissa box fillers must be used
每箱不可有脏污, 变形现象, 尾数箱必须用填充物
 - Confirm whether the inner and outer labels are missing and the content must be consistent with the actual product
确认内外标签有无缺失, 内容与实物必须一致
 - Packing quantity per carton depends on order and delivery quantity
每箱包装数量依订单及交货数量而定

MARK	REVISION DESCRIPTION	SIGNATURE	DATE	TOLERANCE	TITLE:	DRAWN:	CHECKED:	APPROVED:	PART NO.:
△A				±0.30	MX4.2 Double Row Female Housing Without wings Packing	Aruin 2020.03.05	KONNIRA 东莞市康瑞电子有限公司 Dongguan Konnra Electronics Co., Ltd.	PART NO.: H4200F****02A	REV.: A1
△A3			±0.20						
△A2			±0.10						
REVISION DESCRIPTION				ANGLE ±2°	UNIT: mm	SCALE: N/A	SHEET: 1/1	PROJECT ION	DRAWING NO.: 4200HF202-A-P

