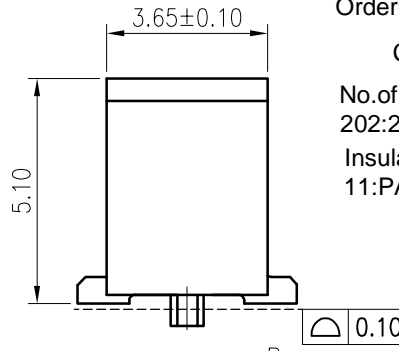
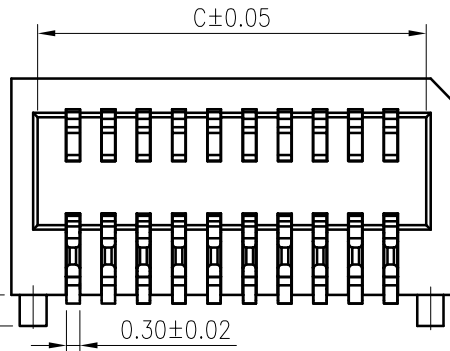
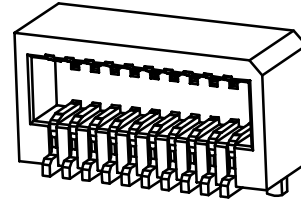
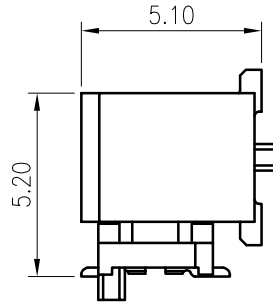
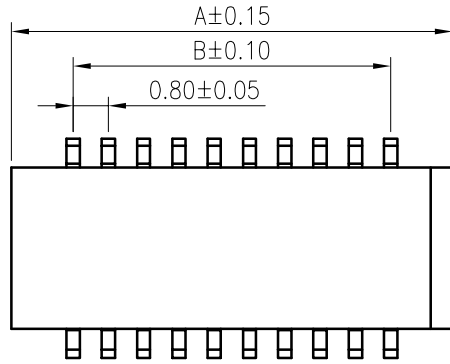


RoHS
COMPLIANT



Ordering Code:

C0802FS *** 01 G01 01RA
 No. of Circuits ——— Plating
 202:2x2,226:2x26 ——— G01:Gold flash
 Insulator Material
 11:PA9T Natural

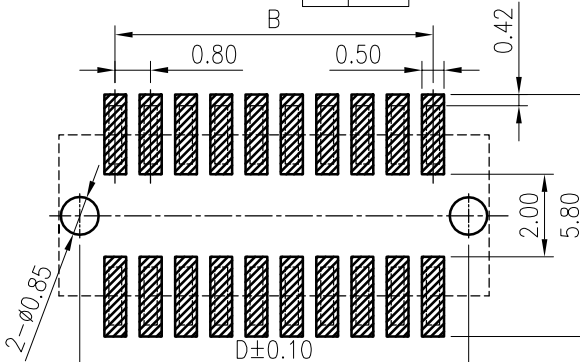
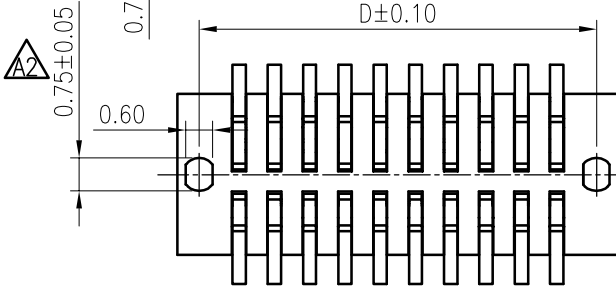
SPECIFICATIONS

1. Current rating: 1A AC, DC
2. Voltage rating: 100V AC,DC
3. Temperature range: -25°C ~ +85°C
4. Insulation resistance: 500MΩ Min.
5. Withstanding voltage: 500V AC/ minute.
6. Contact resistance: 20mΩ Max.

Material:

Insulator: PA9T UL 94V-0
 Contact: Phosphor bronze
 Plating: Gold flash over Nickel
 Mate with KR0802 series plug
 Q'ty: 1,000PCS/Reel

Circuits	Dimensions			
	A	B	C	D
2x2	3.60	0.80	2.40	2.60
2x3	4.40	1.60	3.20	3.40
2x4	5.20	2.40	4.00	4.20
2x5	6.00	3.20	4.80	5.00
2x6	6.80	4.00	5.60	5.80
2x7	7.60	4.80	6.40	6.60
2x8	8.40	5.60	7.20	7.40
2x9	9.20	6.40	8.00	8.20
2x10	10.00	7.20	8.80	9.00
2x11	10.80	8.00	9.60	9.80
2x12	11.60	8.80	10.40	10.60
2x13	12.40	9.60	11.20	11.40
2x14	13.20	10.40	12.00	12.20
2x15	14.00	11.20	12.80	13.00
2x16	14.80	12.00	13.60	13.80
2x17	15.60	12.80	14.40	14.60
2x18	16.40	13.60	15.20	15.40
2x19	17.20	14.40	16.00	16.20
2x20	18.00	15.20	16.80	17.00
2x21	18.80	16.00	17.60	17.80
2x22	19.60	16.80	18.40	18.60
2x23	20.40	17.60	19.20	19.40
2x24	21.20	18.40	20.00	20.20
2x25	22.00	19.20	20.80	21.00
2x26	22.80	20.00	21.60	21.80



Recommended P.C.B. Layout
 Total tolerance:±0.05mm

△4			
△3	Correct view	ZSZ	2022.07.08
△2	Modify Dimension	Arvin	2020.03.24

TOLERANCE	TITLE:
X.X ±0.30	0.8 BTB Side Insert
X.XX ±0.20	SMT 90° Socket
X.XXX ±0.10	With Pillar
Angle ±2°	

DRAWN:	Arvin 2020.03.24
CHECKED:	
APPROVED:	

KONNRA 东莞市康瑞电子有限公司
 DongGuan Konnra Electronics Co., Ltd.
 PART NO. : C0802FSxxx11G0101RA

MARK	REVISION DESCRIPTION	SIGNATURE	DATE	UNIT: mm	SCALE: N/A	SHEET: 1/1	PROJECTION	REV. : A3	DRAWING NO. : 0802WFERS201-A-S
-------------	-----------------------------	------------------	-------------	-----------------	-------------------	-------------------	-------------------	------------------	---------------------------------------