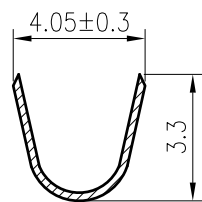
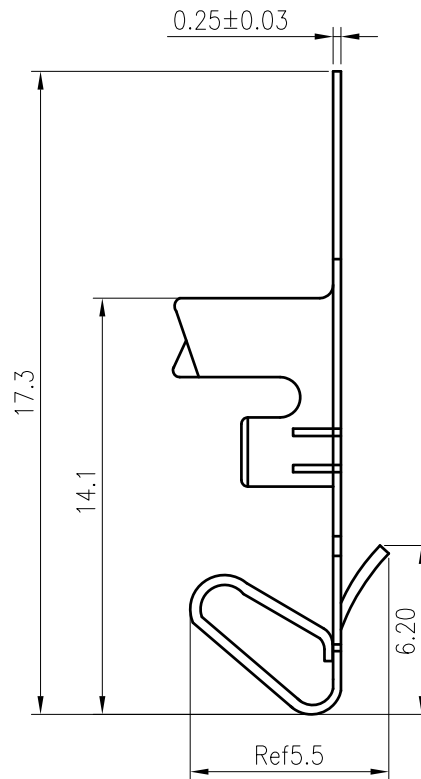
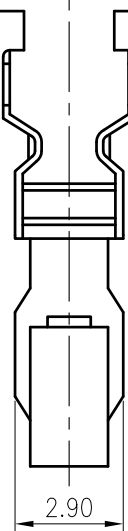
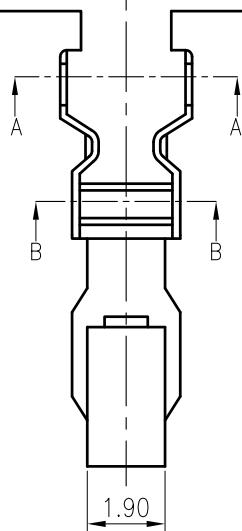
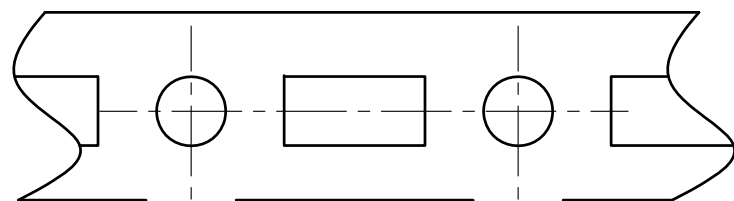
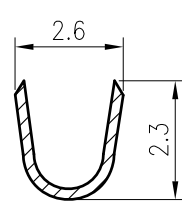


RoHS
COMPLIANT



SECTION A-A



SECTION B-B

SPECIFICATIONS

1. Current rating: 7A AC, DC
2. Voltage rating: 250V AC, DC
3. Temperature range: -40°C ~ +105°C
4. Insulation resistance: 1000MΩ/ min.
5. Withstanding voltage: 1500V AC/ minute.
6. Contact resistance: 20mΩ/ max.

Material: Phosphor Bronze

Finish: Tin plated over Nickel

Applicable wires:

AWG #18~#22

Insulation O.D.: 2.80mm Max.

Suitable KR3960 series Housing

Qty/reel: 5,000PCS

TOLERANCE
X.X ±0.30
X.XX ±0.20
X.XXX ±0.10
Angle ±2°

TITLE:	MX3.96 Terminal
UNIT:mm	SCALE:N/A

DRAWN:	Arwin 2020.05.07
CHECKED:	
APPROVED:	
SHEET: 1/1	PROJECTION

KONNRA 东莞市康瑞电子有限公司	
DongGuan Konnra Electronics Co.,Ltd.	
PART NO.: T39600PT0101B	
REV.: A4	DRAWING NO.: 3960T101-B-S



Uniformly arrange the drawings

ZSZ 2022.1.8

MARK	REVISION DESCRIPTION	SIGNATURE	DATE
------	----------------------	-----------	------