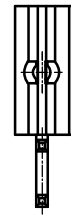
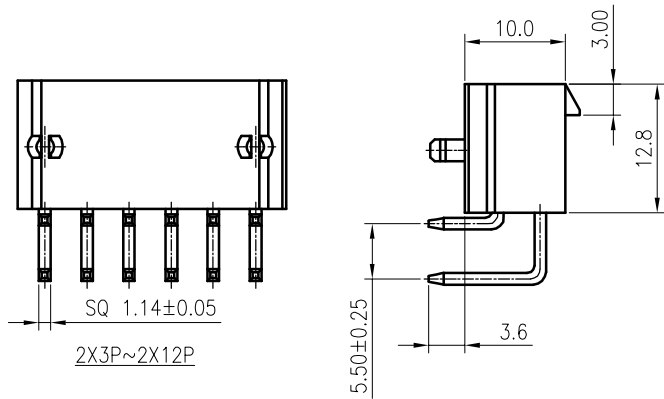
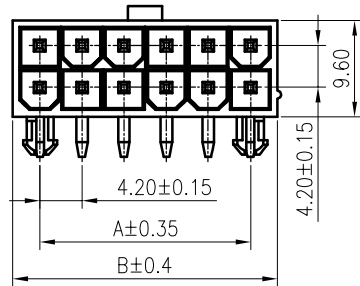
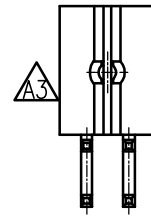


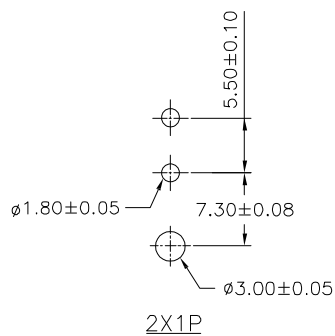
RoHS
COMPLIANT



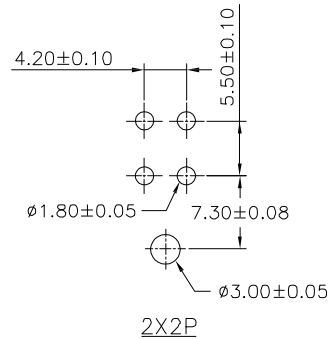
2X1P



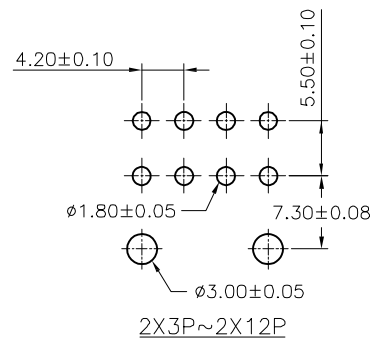
2X2P



2X1P



2X2P



2X3P~2X12P

Recommended P.C.Board Layout

SPECIFICATIONS

1. Current rating: 9A(2P AWG#16) AC, DC
2. Voltage rating:600V AC,DC
3. Temperature range: -40°C ~ +105°C
4. Insulation resistance: 1000MΩ/ min.
5. Withstanding voltage: 1500V AC/ minute.
6. Contact resistance: 10mΩ/ max.

Material:

Insulator: Nylon 66 UL 94V-2
Contact: Brass
Plating: Tin plated over Nickel
Mate with KR4200 series double row male housing

Ordering Code:

C4200RD *** 16 T0102 P C

No. of Circuits }
201:2*1,212:2*12 } Packing
P:Bag
B:Box

Insulator Material }
02:PA66 Black V0
16:PA66 Transparent V2

Circuits	Dimensions		Circuits	Dimensions	
	A	B		A	B
2x1	4.20	5.40	2x7	25.20	30.60
2x2	4.20	9.60	2x8	29.40	34.80
2x3	8.40	13.80	2x9	33.60	39.00
2x4	12.60	18.00	2x10	37.80	43.20
2x5	16.80	22.20	2x11	42.00	47.40
2x6	21.00	26.40	2x12	46.20	51.60

F					TOLERANCE	TITLE:	DRAWN: Liujingtian 2020.5.22	KONNRA 东莞市康瑞电子有限公司	
					X. X ±0.30	MX4.2 DIP double	CHECKED:	DongGuan Konnra Electronics Co., Ltd.	
					X. XX ±0.20	row 90° Wafer solid	APPROVED:	PART NO. : C4200RD***16T0102PC	
					X. XXX ±0.10	needle with post		REV. : A4 DRAWING NO. : 4200WRD202-C-S	
	MARK	REVISION DESCRIPTION	SIGNATURE	DATE	Angle ±2°	UNIT: mm	SCALE: N/A	SHEET: 1/1	PROJECTION
	1	2	3	4	5	6	7	8	9