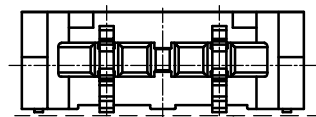
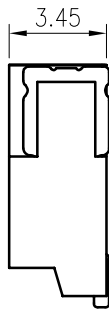
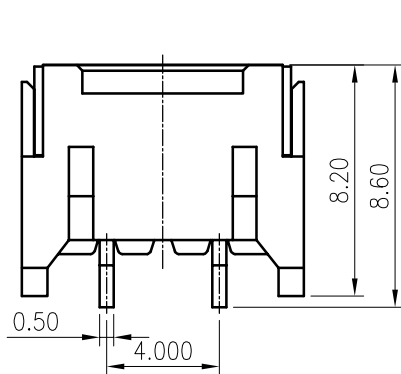
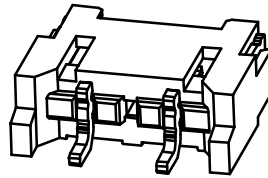
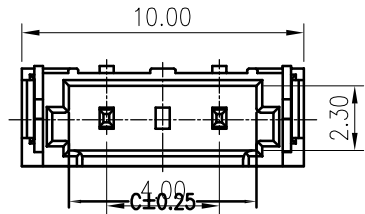
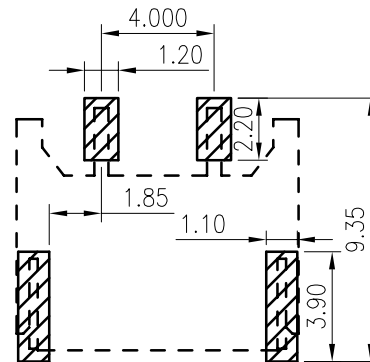


RoHS
COMPLIANT



▧ 0.10 Max



Recommended P.C.B. Layout
Total tolerance: ±0.05mm

SPECIFICATIONS

1. Current rating: 1A AC, DC
2. Voltage rating: 600V AC, DC
3. Temperature range: -40°C ~ +105°C
4. Insulation resistance: 1000MΩ/ min.
5. Withstanding voltage: 1800V AC/ minute.
6. Contact resistance: 20mΩ/ max.

Material:

Insulator: PA9T UL 94V-0
 Contact: Brass
 Solder Nail: Brass
 Plating: Tin plated over Nickel
 Mate With KR4000 series Housing

F	△4				TOLERANCE X. X ±0.30 X. XX ±0.20 X. XXX ±0.10 Angle ±2°	TITLE: BH4.0 SMT 90° Wafer 2P	DRAWN: Arvin 2020.05.30		KONNRA 东莞市康瑞电子有限公司 DongGuan Konnra Electronics Co., Ltd.		
	△3						CHECKED:				
	△2	Change the part number and frame format	Arvin	2020.05.30			APPROVED:		PART NO. : C4000RS10211T0101RA		
	MARK	REVISION DESCRIPTION	SIGNATURE	DATE			UNIT: mm	SCALE: N/A	SHEET: 1/1	PROJECTION	REV. : A2
	1	2	3	4	5	6	7	8	9		