

**RoHS**  
COMPLIANT

**SPECIFICATIONS**

1. Current rating: 3A AC, DC
2. Voltage rating: 250V AC,DC
3. Temperature range: -40°C ~ +105°C
4. Insulation resistance: 1000MΩ Min.
5. Withstanding voltage: 1000V AC/ minute.
6. Contact resistance: 20mΩ Max.

**Material:**

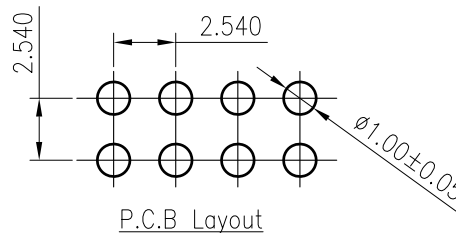
Insulator: Nylon/PBT UL 94V-0  
Contact: Brass  
Plating: Tin plated over Nickel  
Mate with KR2546 series Housing

**Ordering Code:**

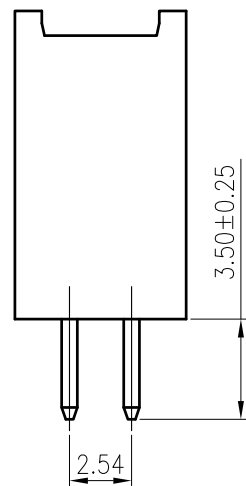
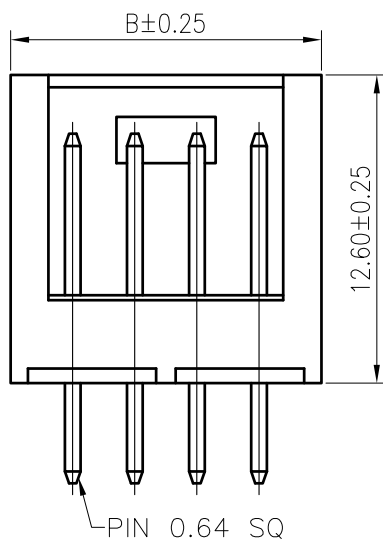
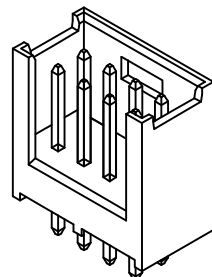
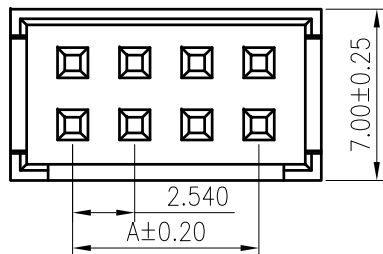
C2546VD \*\*\* 05 T01 01 PB

**No.of Circuits**

202:2\*2,232:2\*32



P.C.B Layout



Circuits	Dimensions		Circuits	Dimensions	
	A	B		A	B
2x2	2.54	7.46	2x18	43.18	48.10
2x3	5.08	10.00	2x19	45.72	50.64
2x4	7.62	12.54	2x20	48.26	53.18
2x5	10.16	15.08	2x21	50.80	55.72
2x6	12.70	17.62	2x22	53.34	58.26
2x7	15.24	20.16	2x23	55.88	60.80
2x8	17.78	22.70	2x24	58.42	63.34
2x9	20.32	25.24	2x25	60.96	65.88
2x10	22.86	27.78	2x26	63.50	68.42
2x11	25.40	30.32	2x27	66.04	70.96
2x12	27.94	32.86	2x28	68.58	73.50
2x13	30.48	35.40	2x29	71.12	76.04
2x14	33.02	37.94	2x30	73.66	78.58
2x15	35.56	40.48	2x31	76.20	81.12
2x16	38.10	43.02	2x32	78.74	83.66
2x17	40.64	45.56			

				TOLERANCE	TITLE: 2.54 Pitch DIP 180° Dual Row Wafer	DRAWN: Liujingtian 2020.5.20	
				X.X ±0.30		CHECKED:	
	Uniformly arrange the drawings	LJT	2020.05.20	X.XX ±0.20		APPROVED:	
				X.XXX ±0.10		PART NO.: C2546VD***05T0101PB	
MARK	REVISION DESCRIPTION	SIGNATURE	DATE	Angle ±2°	UNIT:mm	SCALE:N/A	SHEET:1/1
1	2	3	4	5	6	7	8

KONNRA 东莞市康瑞电子有限公司	
DongGuan Konnra Electronics Co.,Ltd.	
REV.: A2	
DRAWING NO.: 2546WVD201-B-S	
9	