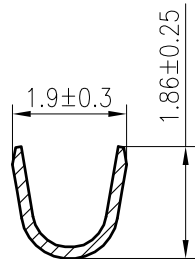
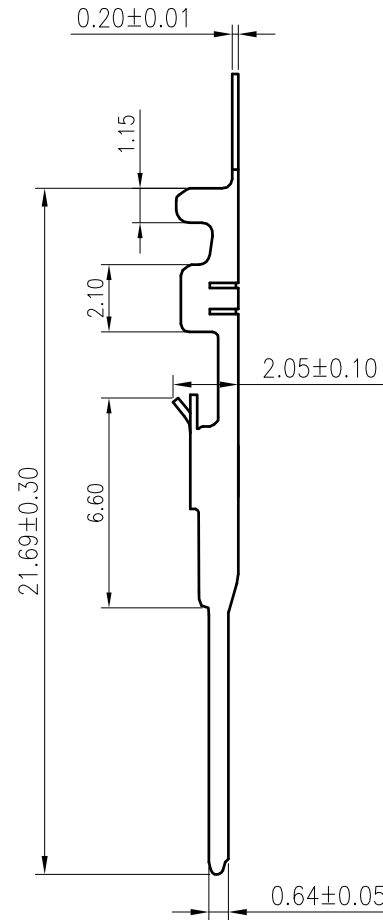
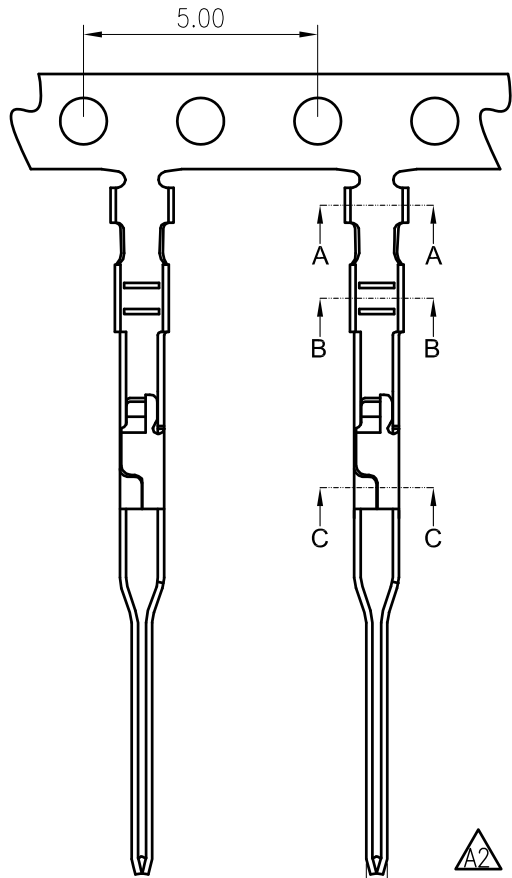
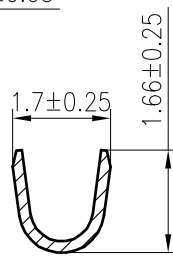


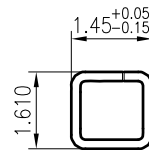
**RoHS**  
COMPLIANT



**SECTION A-A**



**SECTION B-B**



**SEC: C-C**

**SPECIFICATIONS**

1. Current rating: 3A AC, DC
2. Voltage rating: 250V AC,DC
3. Temperature range: -40°C ~ +105°C
4. Insulation resistance: 1000MΩ Min.
5. Withstanding voltage: 1500V AC/ minute.
6. Contact resistance: 20mΩ Max.

Applicable Wires:

AWG#22~#26

Insulation O.D. : 1.60mm MAX

Material: Phosphor Bronze

Plating: Tin plated over nickel

Suitable KR2541 series housing

Q'ty/reel: 15,000 PCS



MARK

				TOLERANCE	TITLE:	DRAWN: <i>Arvin 2020.11.03</i>	<b>KONNRA</b> 东莞市康瑞电子有限公司 DongGuan Konnra Electronics Co.,Ltd.
				X.X ±0.30	MX2.54 Ultra-thin	CHECKED:	
				X.XX ±0.20	Have Buckle Female	APPROVED:	
	Modify 0.64±0.05 for 0.69±0.05	Arvin	2021.04.12	X.XXX ±0.10	Terminal		PART NO.: T2541MPT0101C
	REVISION DESCRIPTION	SIGNATURE	DATE	Angle ±2°	UNIT:mm	SCALE:N/A	REV.:A2