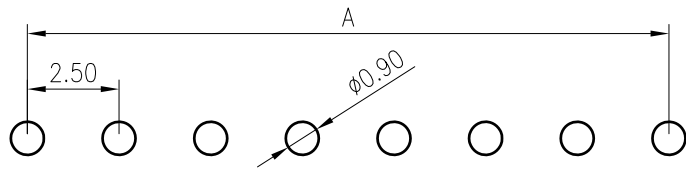
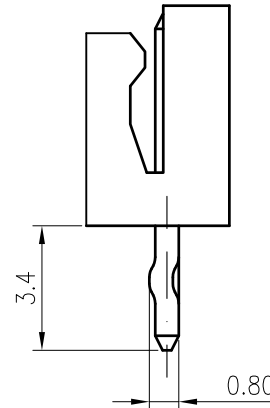
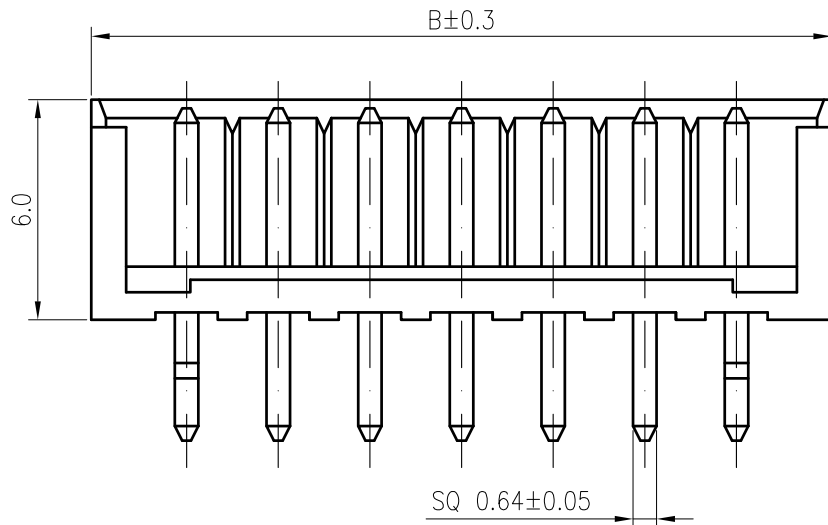
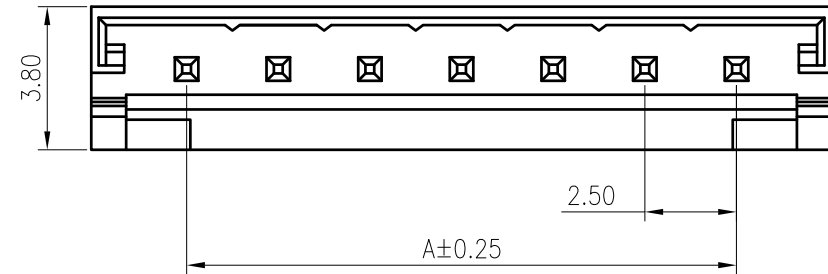


**RoHS**  
COMPLIANT



**Recommend P.C.B. LAYOUT**

**SPECIFICATIONS**

1. Current rating: 3A AC, DC
2. Voltage rating: 250V AC,DC
3. Temperature range: -40°C ~ +105°C
4. Insulation resistance: 1000MΩ Min.
5. Withstanding voltage: 800V AC/ minute.
6. Contact resistance: 20mΩ Max.

**Material:**

Insulator: Nylon 66 UL 94V-0  
 Contact: Brass  
 Plating: Tin plated over Nickel  
 Mate with KR2504 series Housing  
 Ordering Code:

C2504VD \*\*\* 01 T01 01 PA

No.of Circuits  
 102:2,116:16

Circuits	Dimension	
	A	B
2	2.50	7.50
3	5.00	10.00
4	7.50	12.50
5	10.00	15.10
6	12.50	17.50
7	15.00	20.00
8	17.50	20.50
9	20.00	25.00
10	22.50	27.50
11	25.00	30.00
12	27.50	32.50
13	30.00	35.00
14	32.50	37.90
15	35.00	40.00
16	37.50	42.50

TOLERANCE	
X.X	±0.30
X.XX	±0.20
X.XXX	±0.10
Angle	±2°

TITLE: EH2.5 DIP 180° Wafer  
 UNIT:mm SCALE:N/A SHEET:1/1 PROJECTION

DRAWN: Shen 2022.01.13  
 CHECKED:  
 APPROVED:

**KONNRA** 东莞市康瑞电子有限公司  
 DongGuan Konnra Electronics Co.,Ltd.  
 PART NO.: C2504VD\*\*\*01T0101PA  
 REV.: A3 DRAWING NO.: 2504WVD101-A-S

△3	Uniformly arrange the drawings	Shen	2022.01.13
MARK	REVISION DESCRIPTION	SIGNATURE	DATE