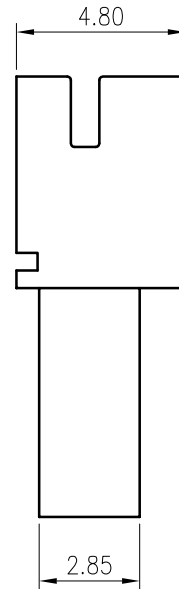
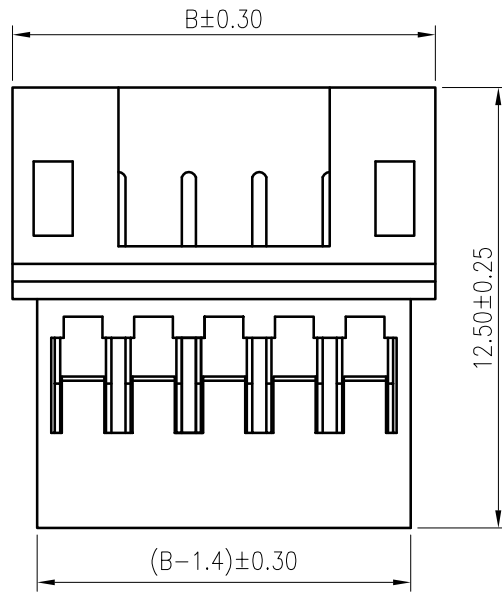
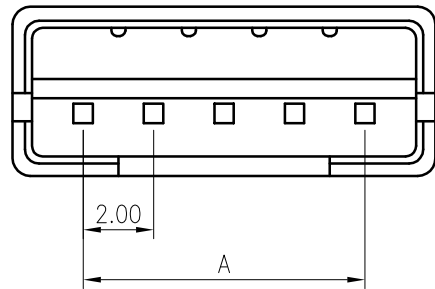


RoHS
COMPLIANT



SPECIFICATIONS

1. Current rating: 2A AC, DC
2. Voltage rating: 100V AC, DC
3. Temperature range: -40°C ~ +105°C
4. Insulation resistance: 1000MΩ/ min.
5. Withstanding voltage: 800V AC/ minute.
6. Contact resistance: 20mΩ/ max.

Material: PA66 UL94 V-0
Suitable KR2015 series terminal
Mate with KR2001 series housing

Ordering Code:

H20150 *** 01 01A

No. of Circuits
102:2, 116:16

Insulator Material
01: PA66 White V0
02: PA66 Black V0



Circuits	Dimensions		Circuits	Dimensions	
	A	B		A	B
2	2.00	6.00	10	18.00	22.00
3	4.00	8.00	11	20.00	24.00
4	6.00	10.00	12	22.00	26.00
5	8.00	12.00	13	24.00	28.00
6	10.00	14.00	14	26.00	30.00
7	12.00	16.00	15	28.00	32.00
8	14.00	18.00	16	30.00	34.00
9	16.00	20.00			

	Add Black Specification	Arvin	2021.03.31
MARK	REVISION DESCRIPTION	SIGNATURE	DATE

TOLERANCE
X.X ±0.30
X.XX ±0.20
X.XXX ±0.10
Angle ±2°

TITLE:
PH2.0 Air docking
Housing

DRAWN: Arvin 2020.04.28

CHECKED:

APPROVED:

UNIT: mm SCALE: N/A

SHEET: 1/1

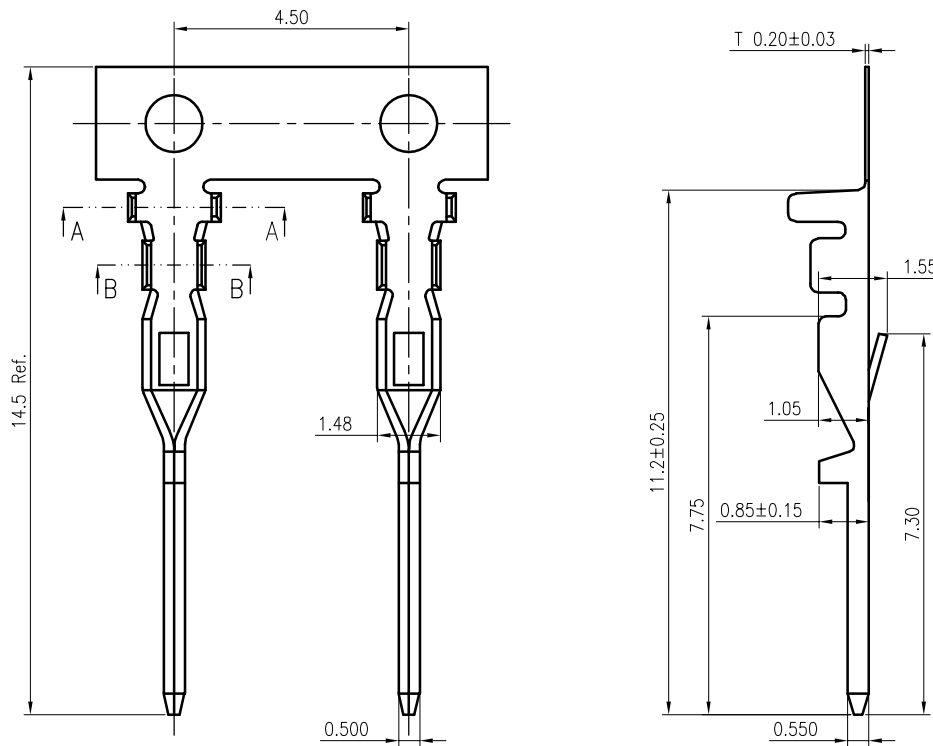
PROJECTION

KONNRA 东莞市康瑞电子有限公司
DongGuan Konnra Electronics Co., Ltd.

PART NO.: H20150*****01A

REV.: A2 DRAWING NO.: 2015H101-A-S

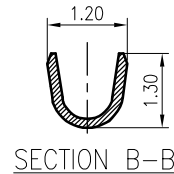
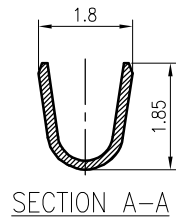
RoHS
COMPLIANT



SPECIFICATIONS

1. Current rating: 2A AC, DC
2. Voltage rating: 100V AC,DC
3. Temperature range: -25°C ~ +85°C
4. Insulation resistance: 1000MΩ Min.
5. Withstanding voltage: 800V AC/ minute.
6. Contact resistance: 20mΩ Max.

Material: Phosphor Bronze
 Plating: Tin-plated over nickel
 Applicable wires:
 AWG #28~#24
 Insulation O.D.: 1.5mm Max.
 Suitable KR2015 series housing
 Mate with KR2001 series terminal
 Q'ty/reel:10,000PCS



F	A4				TOLERANCE X.X ±0.30 X.XX ±0.20 X.XXX ±0.10 Angle ±2°	TITLE: PH2.0 Air docking Terminal	DRAWN: Arvin 2020.11.06		KONNRA 东莞市康瑞电子有限公司 DongGuan Konnra Electronics Co., Ltd.		
	A3						CHECKED:				
	A2						APPROVED:		PART NO. : TT20150PT0101A		
	MARK	REVISION DESCRIPTION	SIGNATURE	DATE			UNIT: mm	SCALE: N/A	SHEET: 1/1	PROJECTION	REV. : A1
	1	2	3	4	5	6	7	8	9		