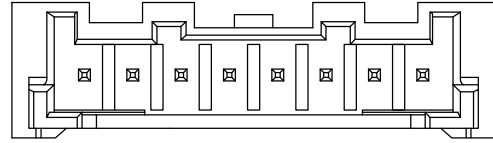
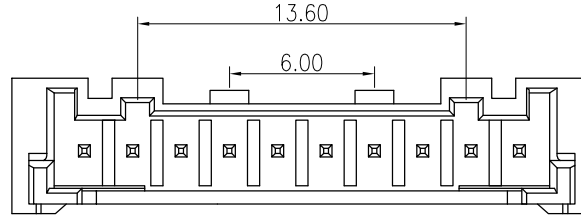


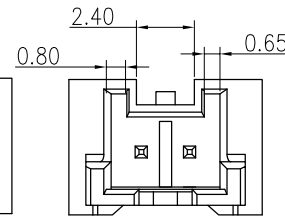
**RoHS**  
COMPLIANT



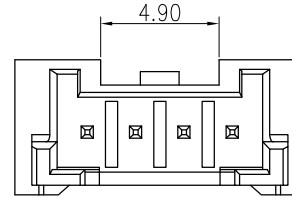
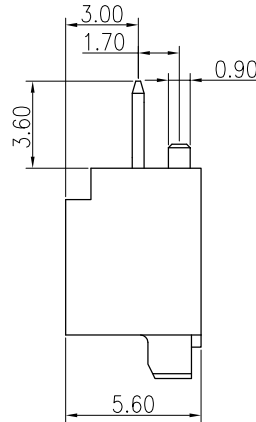
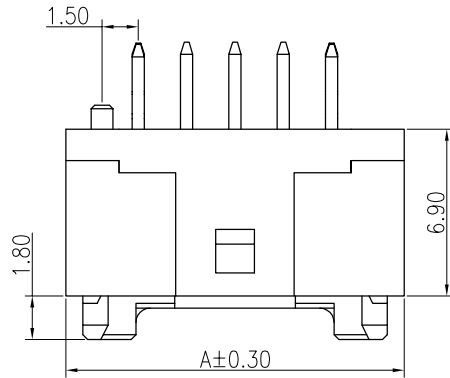
8P View



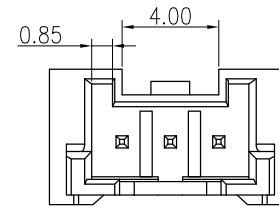
10P-15P View



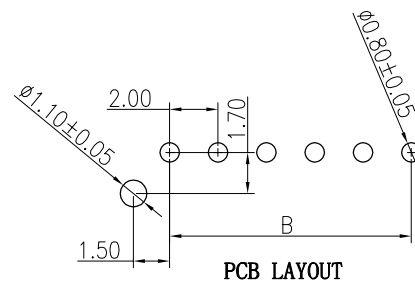
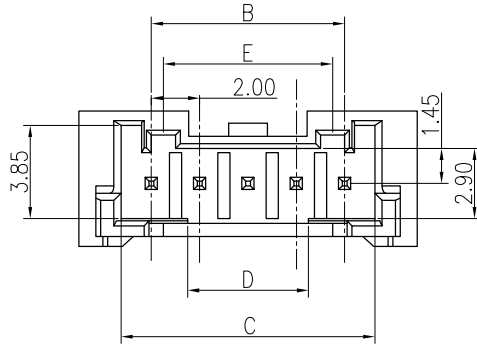
2P View



4P View



3P View



PCB LAYOUT

◆SPECIFICATIONS

- Current rating: 3A (AWG #24)AC, DC
- Voltage rating: 250V AC,DC
- Temperature range: -40°C ~ +105°C
- Insulation resistance:1000MΩ Min.
- Withstanding voltage: 800V AC/ minute.
- Contact resistance: 20mΩ Max.

Material:

Insulator: Nylon 9T UL 94V-0

Pin: Brass

Plating: Tin plated over Nickel

Suitable: KR2014 series Housing

PART NO: C2014VD1\*\*11M0107PA

02: 2P

16: 16P

11: PA9T Natural

M01: Matte Tin

P: BAG

15P	34.00	28.00	30.50	23.00	13.60
14P	32.00	26.00	28.50	21.00	13.60
13P	30.00	24.00	26.50	19.00	13.60
12P	28.00	22.00	24.50	17.00	13.60
11P	26.00	20.00	22.50	15.00	13.60
10P	24.00	18.00	20.50	13.00	13.60
9P	22.00	16.00	18.50	11.00	7.00
8P	20.00	14.00	16.50	9.00	7.00
7P	18.00	12.00	14.50	7.00	7.00
6P	16.00	10.00	12.50	5.00	7.00
5P	14.00	8.00	10.50	5.00	7.00
4P	12.00	6.00	8.50	5.00	---
3P	10.00	4.00	6.50	1.00	---
2P	8.00	2.00	4.50	---	---
PIN	A	B	C	D	E

F				TOLERANCE	TITLE:	DRAWN: <i>3S3 2022.03.03</i>		KONNRA 东莞市康瑞电子有限公司	
				X.X ±0.30	PA2.0 DIP 180° WF No K	CHECKED:		DongGuan Konnra Electronics Co.,Ltd.	
				X.XX ±0.25		APPROVED:		PART NO.: C2014VD1**11M0107PA	
				X.XXX ±0.10		UNIT:mm	SCALE:1/1	SHEET:1/1	PROJECTION
	MARK	REVISION DESCRIPTION	SIGNATURE	DATE	Angle ±2°				
	1	2	3	4	5	6	7	8	9