

RoHS
COMPLIANT

SPECIFICATIONS

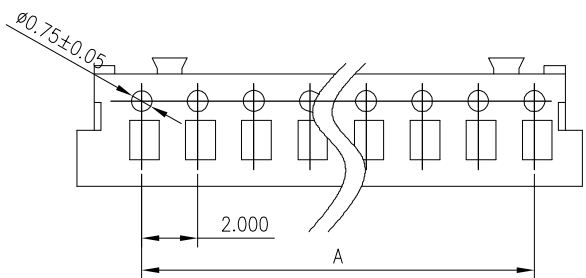
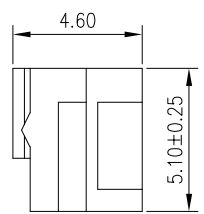
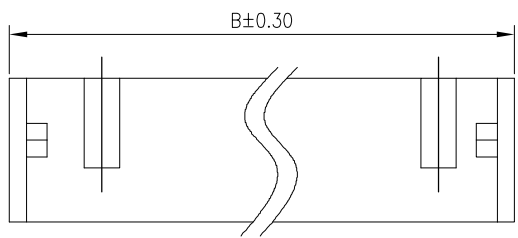
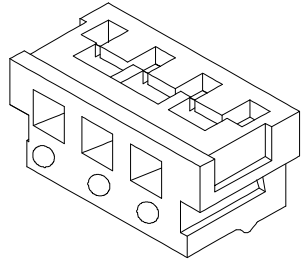
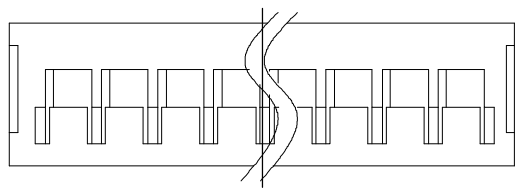
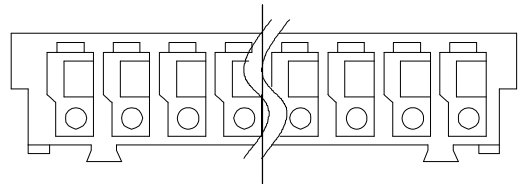
1. Current rating: 3A AC, DC
2. Voltage rating: 125V AC,DC
3. Temperature range: -40°C ~ +105°C
4. Insulation resistance: 1000MΩ Min.
5. Withstanding voltage: 1000V AC/ minute.
6. Contact resistance: 20mΩ Max.

Material: PA66 UL 94V-0
Suitable KR2008 series terminal
Mate with KR2008 series wafer

Ordering Code:

H20080 *** 01 01B

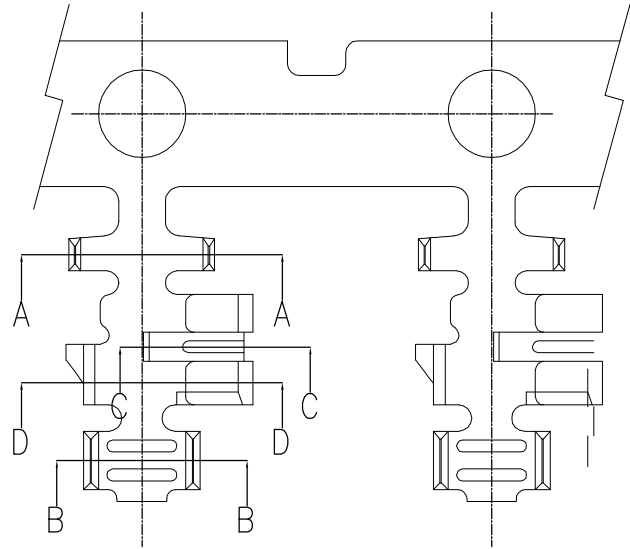
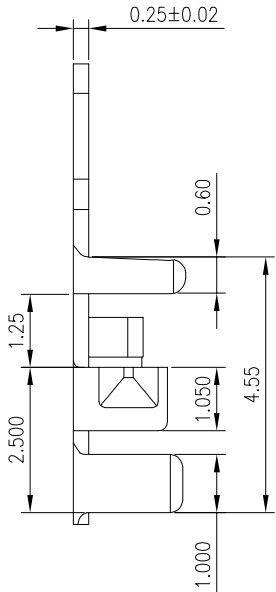
No. of Circuits ———
102:2,115:15
Insulator Material ———
01:PA66 White V0



Circuits	Dimensions	
	A	B
2	2.00	6.00
3	4.00	8.00
4	6.00	10.00
5	8.00	12.00
6	10.00	14.00
7	12.00	16.00
8	14.00	18.00
9	16.00	20.00
10	18.00	22.00
11	20.00	24.00
12	22.00	26.00
13	24.00	28.00
14	26.00	30.00
15	28.00	32.00

F					TOLERANCE X. X ±0.30 X. XX ±0.20 X. XXX ±0.10 Angle ±2°	TITLE: AMP 2.0 Housing	DRAWN: Liujingtian 2020.05.04		KONNRA 东莞市康瑞电子有限公司		
							CHECKED:		Dongguan Konnra Electronics Co., Ltd.		
		Change the part number and frame format	LJT	2020.05.04			APPROVED:		PART NO. : H20080***0101B		
	MARK	REVISION DESCRIPTION	SIGNATURE	DATE			UNIT: mm	SCALE: N/A	SHEET: 1/1	PROJECTION	REV. : A2
	1	2	3	4	5	6	7	8	9		

RoHS
COMPLIANT



SPECIFICATIONS

1. Current rating: 3A AC, DC
2. Voltage rating: 125V AC,DC
3. Temperature range: -40°C ~ +105°C
4. Insulation resistance: 1000MΩ Min.
5. Withstanding voltage: 1000V AC/ minute.
6. Contact resistance: 20mΩ Max.

Applicable Wires:

AWG#22~#26

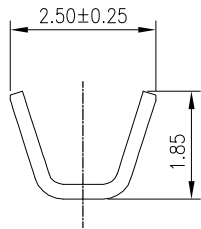
Insulation O.D. : 1.50mm MAX

Material: Phosphor Bronze

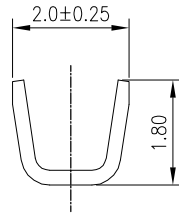
Plating: Tin-Plated over nickel

Suitable KR2008 series housing

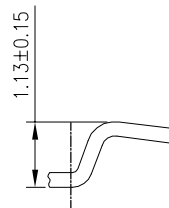
Q'ty/reel: 10,000 PCS



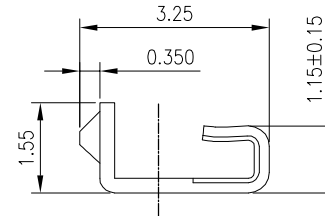
SECTION A-A



SECTION B-B



SECTION C-C



SECTION D-D



MARK

Change the part number and frame format

LJT

2020.05.04

TOLERANCE

X. X ±0.30

X. XX ±0.20

X. XXX ±0.10

Angle ±2°

TITLE:

AMP2.0 Terminal

UNIT: mm

SCALE: N/A

DRAWN: Liujiangtian 2020.05.04

CHECKED:

APPROVED:

SHEET: 1/1

PROJECTION

KONNRA 东莞市康瑞电子有限公司

DongGuan Konnra Electronics Co., Ltd.

PART NO. : T20080P***01B

REV. : A2

DRAWING NO. : 2008T101-B-S

1

2

3

4

5

6

7

8

9

RoHS
COMPLIANT

SPECIFICATIONS

1. Current rating: 4A AC, DC
2. Voltage rating: 125V AC,DC
3. Temperature range: -40°C ~ +105°C
4. Insulation resistance: 1000MΩ Min.
5. Withstanding voltage: 1000V AC/ minute.
6. Contact resistance: 20mΩ Max.

Material:

Insulator: PA66 UL 94V-0

Contact: Brass

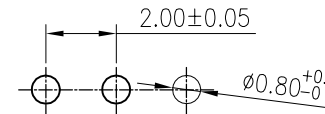
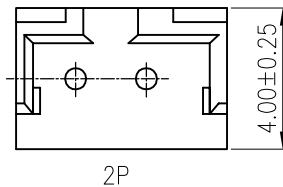
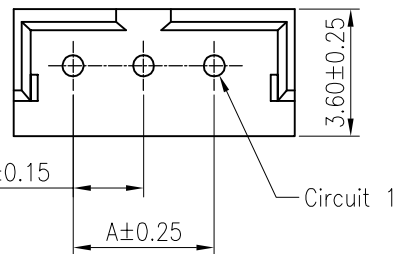
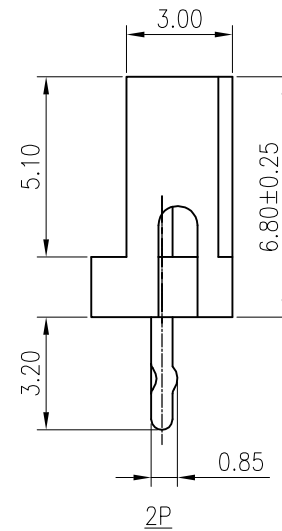
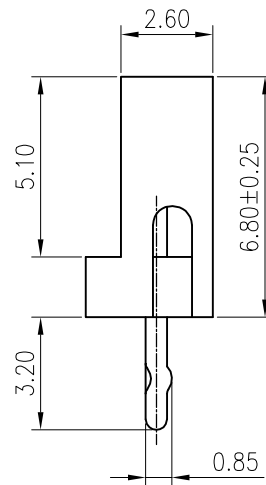
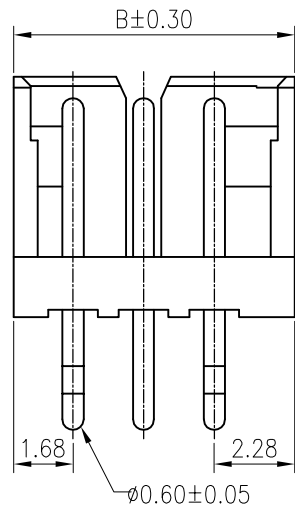
Plating: Tin plated over nickel

Mate with KR2008 series housing

Ordering Code:

C2008VD *** 01T0101PB

No. of Circuits
102:2,115:15



Recommended P.C.B. Layout
Total tolerance:±0.05mm

Circuits	Dimensions	
	A	B
2	2.00	5.96
3	4.00	7.96
4	6.00	9.96
5	8.00	11.96
6	10.00	13.96
7	12.00	15.96
8	14.00	17.96
9	16.00	19.96
10	18.00	21.96
11	20.00	23.96
12	22.00	25.96
13	24.00	27.96
14	26.00	29.96
15	28.00	31.96



MARK

1

2

3

4

5

6

7

8

9

TOLERANCE

X. X ±0.30
X. XX ±0.20
X. XXX ±0.10
Angle ±2°

TITLE:
AMP 2.0 DIP 180°
Wafer

UNIT: mm SCALE: 1/1

DRAWN: ZSZ 2021.09.09

CHECKED:

APPROVED:

SHEET: 1/1

PROJECTION

KONNRA 东莞市康瑞电子有限公司
DongGuan Konnra Electronics Co., Ltd.

PART NO. : C2008VD***01T0101PB

REV. : A3 DRAWING NO. : 2008WDD101-B-S

RoHS
COMPLIANT

SPECIFICATIONS

1. Current rating: 4A AC, DC
2. Voltage rating: 125V AC,DC
3. Temperature range: -40°C ~ +105°C
4. Insulation resistance: 1000MΩ Min.
5. Withstanding voltage: 1000V AC/ minute.
6. Contact resistance: 20m Ω Max.

Material:

Insulator: PA66 UL 94V-0

Contact: Brass

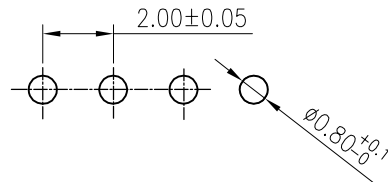
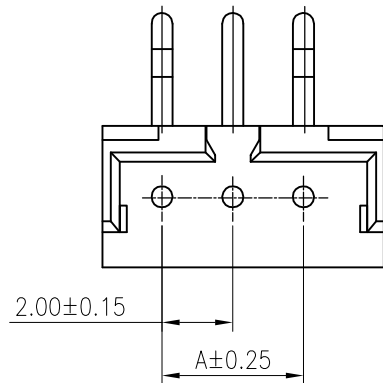
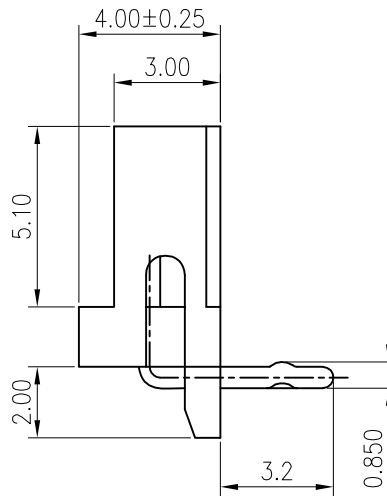
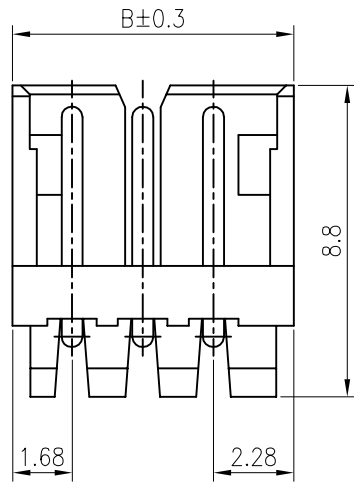
Plating: Tin plated over nickel

Mate with KR2008 series housing

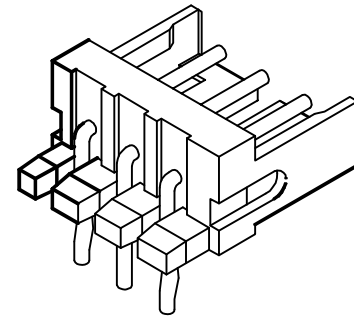
Ordering Code:

C2008RD *** 01T0101PB

No.of Circuits
102:2,115:15



Recommended P.C.B. Layout
Total tolerance:±0.05mm



Circuits	Dimensions	
	A	B
2	2.00	5.96
3	4.00	7.96
4	6.00	9.96
5	8.00	11.96
6	10.00	13.96
7	12.00	15.96
8	14.00	17.96
9	16.00	19.96
10	18.00	21.96
11	20.00	23.96
12	22.00	25.96
13	24.00	27.96
14	26.00	29.96
15	28.00	31.96



MARK

Uni formly arrange the drawings

Change the part number and frame format

1

2

3

4

5

6

7

8

9

TOLERANCE

- X. X ±0.30
- X. XX ±0.20
- X. XXX ±0.10
- Angle ±2°

TITLE:
AMP 2.0 DIP 90°
Wafer

UNIT: mm SCALE: N/A

DRAWN: ZSZ 2021.09.09

CHECKED:

APPROVED:

SHEET: 1/1

PROJECTION

KONNRA 东莞市康瑞电子有限公司
DongGuan Konnra Electronics Co., Ltd.

PART NO. : C2008RD***01T0101PB

REV. : A3 DRAWING NO. : 2008WRD101-B-S