

**RoHS**  
COMPLIANT

**SPECIFICATIONS**

1. Current rating: 3A AC, DC
2. Voltage rating: 250V AC, DC
3. Temperature range: -40°C ~ +105°C
4. Insulation resistance: 1000MΩ/ min.
5. Withstanding voltage: 1000V AC/ minute.
6. Contact resistance: 20mΩ/ max.

**Material:**

Insulator: PA66 UL 94V-0

Contact: Brass

Plating: Tin plated over Nickel

**Ordering Code:**

H200601\*\*020\*A

102=2P

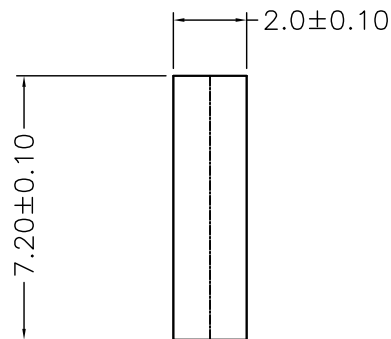
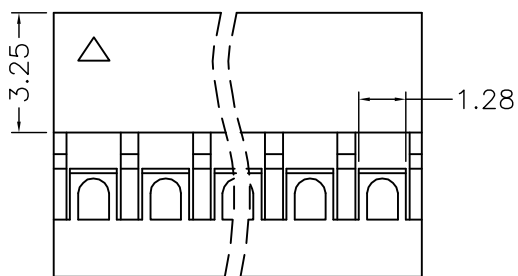
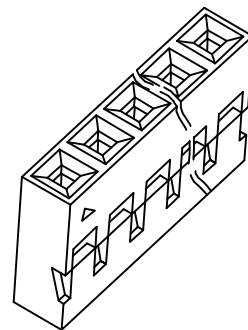
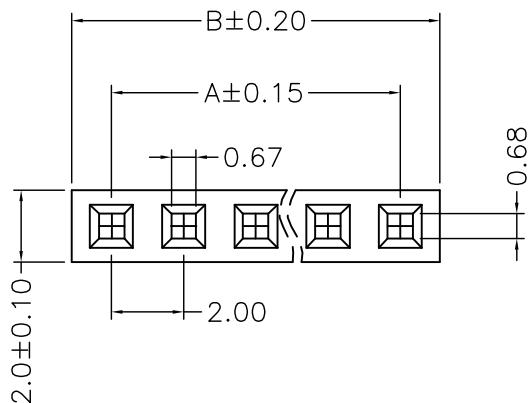
103=3P

.....

00:Halogen free

01:Conventional products

02:PA66 UL94 V-0 black



PIN位	A	B	PIN位	A	B
2PIN	2.00	4.40	14PIN	26.00	28.40
3PIN	4.00	6.40	15PIN	28.00	30.40
4PIN	6.00	8.40	16PIN	30.00	32.40
5PIN	8.00	10.40	17PIN	32.00	34.40
6PIN	10.00	12.40	18PIN	34.00	36.40
7PIN	12.00	14.40	19PIN	36.00	38.40
8PIN	14.00	16.40	20PIN	38.00	40.40
9PIN	16.00	18.40	21PIN	40.00	42.40
10PIN	18.00	20.40	22PIN	42.00	44.40
11PIN	20.00	22.40	23PIN	44.00	46.40
12PIN	22.00	24.40	24PIN	46.00	48.40
13PIN	24.00	26.40	25PIN	48.00	50.40



Update Item No. Description ZSZ 2022.11.03

Change the part number and frame format TLX 2020.04.02

MARK REVISION DESCRIPTION SIGNATURE DATE

TOLERANCE  
X.X ±0.30  
X.XX ±0.20  
X.XXX ±0.10  
Angle ±2°

TITLE:  
DP2.0 Housing  
UNIT:mm SCALE:N/A

DRAWN: TLX 2020.04.02  
CHECKED:  
APPROVED:  
SHEET: 1/1 PROJECTION

**KONNRA** 东莞市康瑞电子有限公司  
DongGuan Konnra Electronics Co.,Ltd.  
PART NO.: H200601\*\*020\*A  
REV.: A3 DRAWING NO.: 2006H101-A-S

1

2

3

4

5

6

7

8

9

**RoHS**  
COMPLIANT

**SPECIFICATIONS**

1. Current rating: 2A AC, DC
2. Voltage rating: 250V AC, DC
3. Temperature range: -40°C ~ +105°C
4. Insulation resistance: 1000MΩ/ min.
5. Withstanding voltage: 1000V AC/ minute.
6. Contact resistance: 20mΩ/ max.

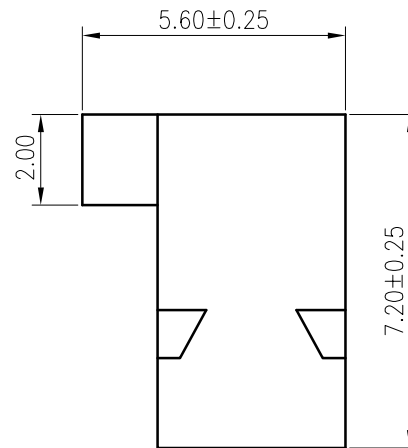
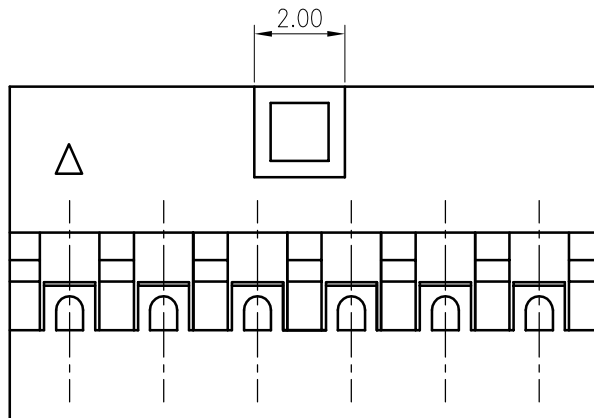
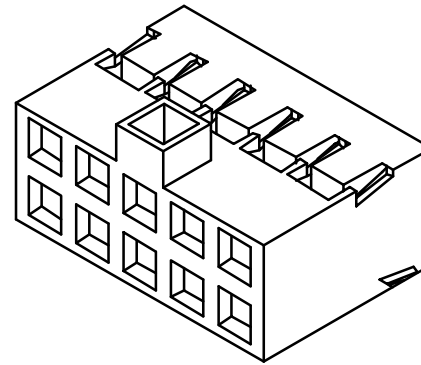
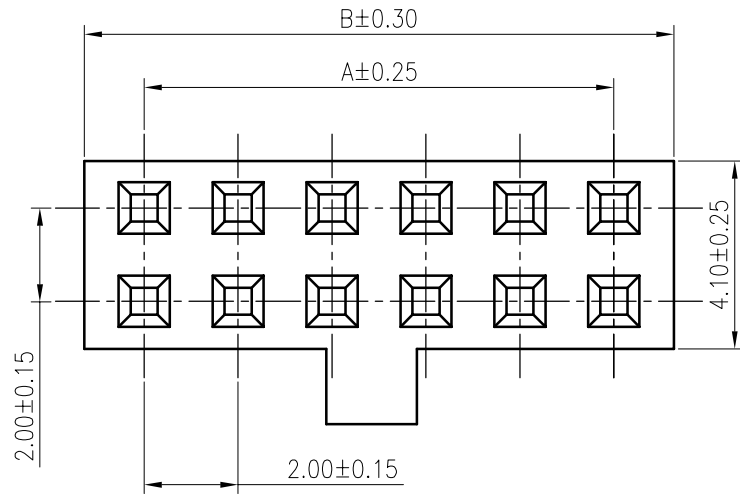
Material: PA66 UL94 V0  
Suitable KR2006 series terminal  
Mate with KR2006 series pin header

Ordering Code:

H20060 \*\*\* \*\* 02F

No. of Circuits }  
202:2x2, 225:2x25  
Insulator Material }  
02:PA66 Black V0

Circuits	Dimensions		Circuits	Dimensions	
	A	B		A	B
2x2	2.00	4.20	2x14	26.00	28.20
2x3	4.00	6.20	2x15	28.00	30.20
2x4	6.00	8.20	2x16	30.00	32.20
2x5	8.00	10.20	2x17	32.00	34.20
2x6	10.00	12.20	2x18	34.00	36.20
2x7	12.00	14.20	2x19	36.00	38.20
2x8	14.00	16.20	2x20	38.00	40.20
2x9	16.00	18.20	2x21	40.00	42.20
2x10	18.00	20.20	2x22	42.00	44.20
2x11	20.00	22.20	2x23	44.00	46.20
2x12	22.00	24.20	2x24	46.00	48.20
2x13	24.00	26.20	2x25	48.00	50.20



MARK	REVISION	DESCRIPTION	SIGNATURE	DATE
A3				
A2				
A1				

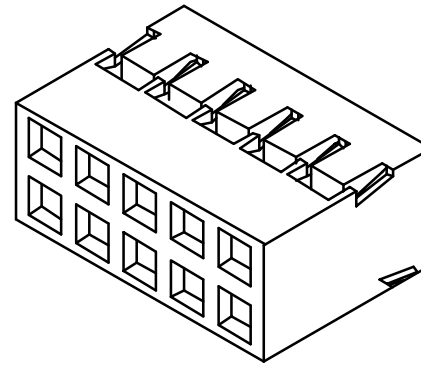
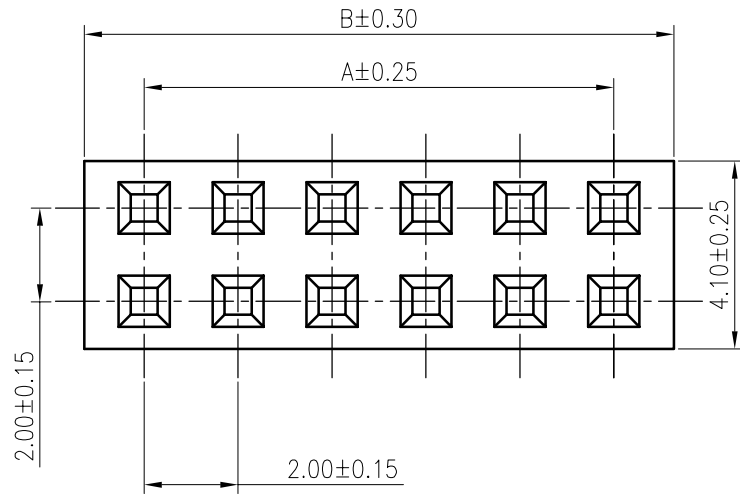
**TOLERANCE**  
X. X ± 0.30  
X. XX ± 0.20  
X. XXX ± 0.10  
Angle ± 2°

**TITLE:**  
DP2.0 Housing Dual  
Row With Convex  
**UNIT:** mm **SCALE:** N/A

**DRAWN:** Arvin 2020.04.09  
**CHECKED:**  
**APPROVED:**  
**SHEET:** 1/1 **PROJECTION:**

**KONNRA** 东莞市康瑞电子有限公司  
DongGuan Konnra Electronics Co., Ltd.  
**PART NO.:** H20060xxx0202F  
**REV.:** A1 **DRAWING NO.:** 2006H202-F-S

**RoHS**  
COMPLIANT



**SPECIFICATIONS**

1. Current rating: 2A AC, DC
2. Voltage rating: 250V AC, DC
3. Temperature range: -40°C ~ +105°C
4. Insulation resistance: 1000MΩ/ min.
5. Withstanding voltage: 1000V AC/ minute.
6. Contact resistance: 20mΩ/ max.

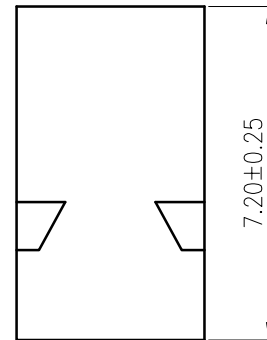
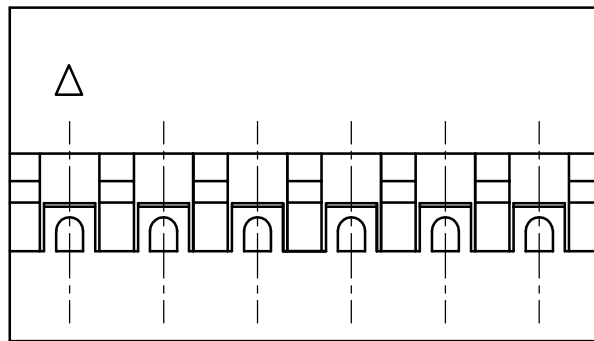
Material: PA66 UL94 V0  
Suitable KR2006 series terminal  
Mate with KR2006 series pin header

Ordering Code:

H20060 \*\*\* \*\* 01F

No. of Circuits  
202:2x2, 225:2x25

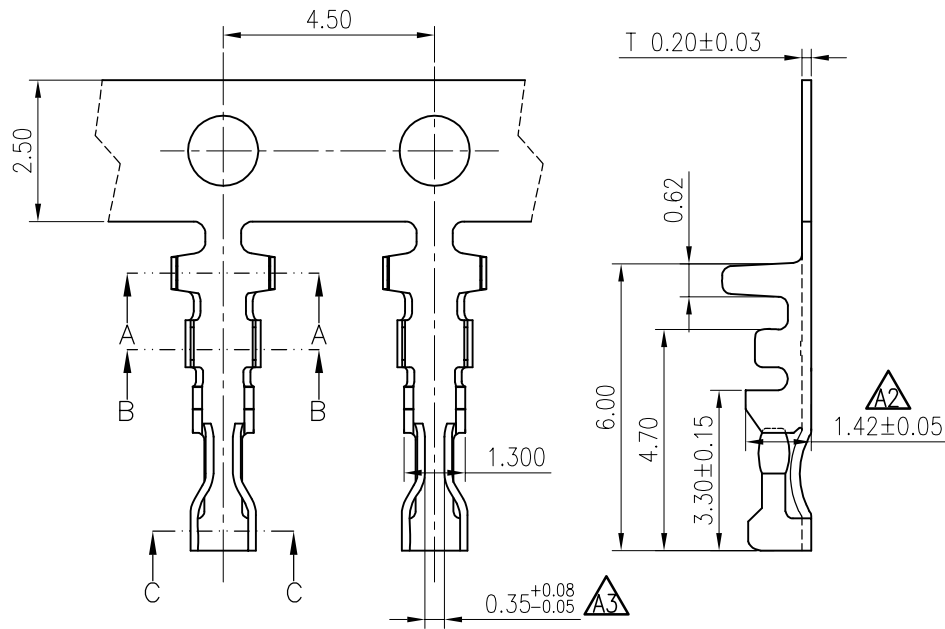
Insulator Material  
02:PA66 Black V0



Circuits	Dimensions		Circuits	Dimensions	
	A	B		A	B
2x2	2.00	4.20	2x14	26.00	28.20
2x3	4.00	6.20	2x15	28.00	30.20
2x4	6.00	8.20	2x16	30.00	32.20
2x5	8.00	10.20	2x17	32.00	34.20
2x6	10.00	12.20	2x18	34.00	36.20
2x7	12.00	14.20	2x19	36.00	38.20
2x8	14.00	16.20	2x20	38.00	40.20
2x9	16.00	18.20	2x21	40.00	42.20
2x10	18.00	20.20	2x22	42.00	44.20
2x11	20.00	22.20	2x23	44.00	46.20
2x12	22.00	24.20	2x24	46.00	48.20
2x13	24.00	26.20	2x25	48.00	50.20

F					<b>TOLERANCE</b> X. X ±0.30 X. XX ±0.20 X. XXX ±0.10 Angle ±2°	<b>TITLE:</b> DP2.0 Housing Dual Row	<b>DRAWN:</b> Arvin 2020.04.09		<b>KONNRA</b> 东莞市康瑞电子有限公司 DongGuan Konnra Electronics Co., Ltd.	
							<b>CHECKED:</b>		<b>PART NO.:</b> H20060xxx0201F	
							<b>APPROVED:</b>		<b>REV.:</b> A1 <b>DRAWING NO.:</b> 2006H201-F-S	
	<b>MARK</b>	<b>REVISION DESCRIPTION</b>	<b>SIGNATURE</b>	<b>DATE</b>	<b>UNIT:</b> mm	<b>SCALE:</b> N/A	<b>SHEET:</b> 1/1	<b>PROJECTION:</b>		
	1	2	3	4	5	6	7	8	9	

RoHS  
COMPLIANT



**SPECIFICATIONS**

1. Current rating: 2A AC, DC
2. Voltage rating: 250V AC, DC
3. Temperature range: -40°C ~ +105°C
4. Insulation resistance: 1000MΩ/ min.
5. Withstanding voltage: 1000V AC/ minute.
6. Contact resistance: 20mΩ/ max.

Material: Brass

Plating: Selective gold plated over Nickel

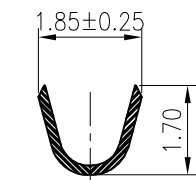
Applicable Wires:

AWG#24~#28

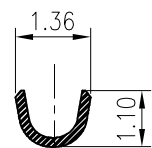
Insulation O.D. : 1.40mm MAX

Suitable KR2006 series housing

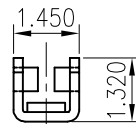
Q'ty/Reel: 20,000 PCS



SECTION A-A



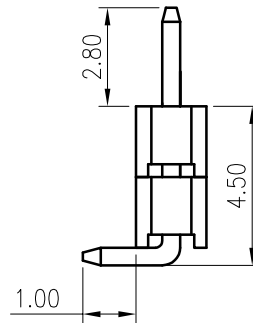
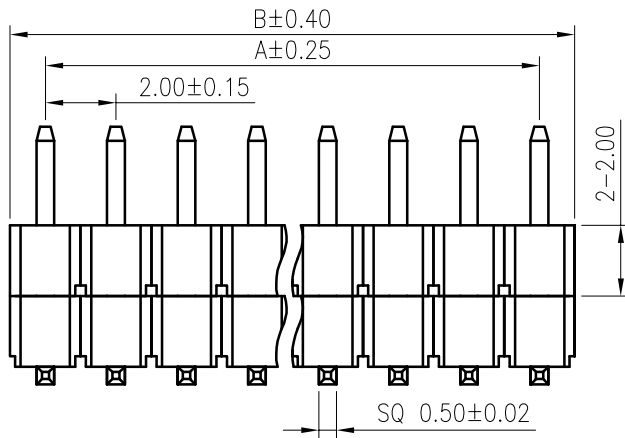
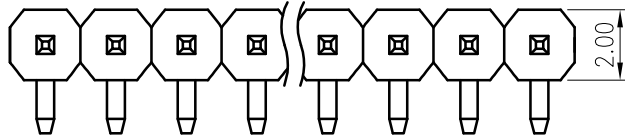
SECTION B-B



SECTION C-C

F					<b>TOLERANCE</b> X. X ± 0.30 X. XX ± 0.20 X. XXX ± 0.10 Angle ± 2°	<b>TITLE:</b> DP2.0 Terminal	DRAWN: Arvin 2020.04.09		KONNRA 东莞市康瑞电子有限公司		
		Add dimensions	Arvin	2021.09.16			CHECKED:		DongGuan Konnra Electronics Co., Ltd.		
		Change 1.35 to 1.42	Arvin	2021.06.10			APPROVED:		PART NO. : T20060BB0201B		
	MARK	REVISION DESCRIPTION	SIGNATURE	DATE			UNIT: mm	SCALE: N/A	SHEET: 1/1	PROJECTION	REV. : A3
	1	2	3	4	5	6	7	8	9		

RoHS  
COMPLIANT



Recommended P.C.B. Layout  
Total tolerance:±0.05mm

**SPECIFICATIONS**

1. Current rating: 2A AC, DC
2. Voltage rating: 250V AC,DC
3. Temperature range: -40°C ~ +105°C
4. Insulation resistance: 1000MΩ/ min.
5. Withstanding voltage: 1000V AC/ minute.
6. Contact resistance: 20mΩ/ max.

**Material:**

Insulator: PA6T UL 94V-0  
Contact: Brass  
Plating: Gold flash over Nickel  
Mate with KR2006 series housing or female header

A=2.00X(Circuits-1)  
B=A+2.00

**Ordering Code:**

C2006RD \*\*\* 10 G01 02PG  
No. of Circuits | Plating  
102:2,140:40 | G01:Gold flash  
Insulator Material |  
10:PA6T Black

F	△4				<b>TOLERANCE</b> X.X ±0.30 X.XX ±0.20 X.XXX ±0.10 Angle ±2°	<b>TITLE:</b> DP2.0 DIP 90° Pin Header PA2.8H2.0 D1.0 Double Base	<b>DRAWN:</b> Arvin 2021.02.01  <b>CHECKED:</b>  <b>APPROVED:</b>	<b>KONNRA</b> 东莞市康瑞电子有限公司 DongGuan Konnra Electronics Co., Ltd.		
	△3									
	△2									
	<b>MARK</b>	<b>REVISION DESCRIPTION</b>	<b>SIGNATURE</b>	<b>DATE</b>						
	1	2	3	4	UNIT: mm	SCALE: N/A	SHEET: 1/1	PROJECTION	REV. : A1	DRAWING NO. : 2006WWRD102-G-S