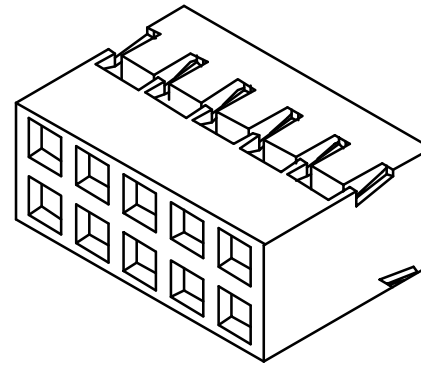
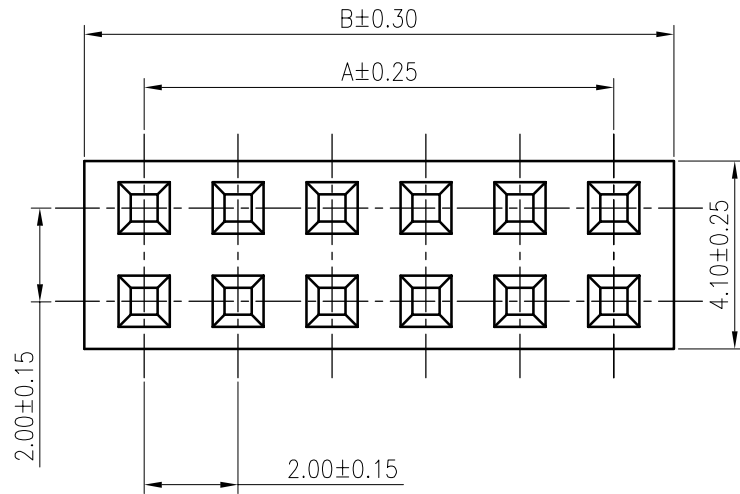


**RoHS**  
COMPLIANT



**SPECIFICATIONS**

1. Current rating: 2A AC, DC
2. Voltage rating: 250V AC, DC
3. Temperature range: -40°C ~ +105°C
4. Insulation resistance: 1000MΩ/ min.
5. Withstanding voltage: 1000V AC/ minute.
6. Contact resistance: 20mΩ/ max.

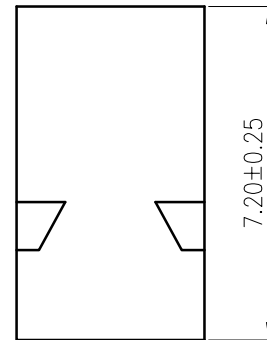
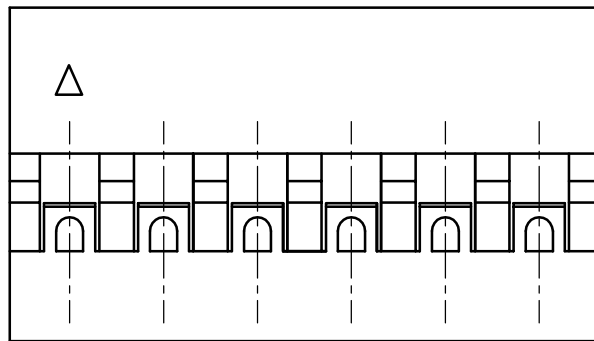
Material: PA66 UL94 V0  
Suitable KR2006 series terminal  
Mate with KR2006 series pin header

Ordering Code:

H20060 \*\*\* \*\* 01F

No. of Circuits }  
202:2x2, 225:2x25

Insulator Material }  
02:PA66 Black V0



Circuits	Dimensions		Circuits	Dimensions	
	A	B		A	B
2x2	2.00	4.20	2x14	26.00	28.20
2x3	4.00	6.20	2x15	28.00	30.20
2x4	6.00	8.20	2x16	30.00	32.20
2x5	8.00	10.20	2x17	32.00	34.20
2x6	10.00	12.20	2x18	34.00	36.20
2x7	12.00	14.20	2x19	36.00	38.20
2x8	14.00	16.20	2x20	38.00	40.20
2x9	16.00	18.20	2x21	40.00	42.20
2x10	18.00	20.20	2x22	42.00	44.20
2x11	20.00	22.20	2x23	44.00	46.20
2x12	22.00	24.20	2x24	46.00	48.20
2x13	24.00	26.20	2x25	48.00	50.20

F					<b>TOLERANCE</b> X. X ±0.30 X. XX ±0.20 X. XXX ±0.10 Angle ±2°	<b>TITLE:</b> DP2.0 Housing Dual Row	<b>DRAWN:</b> Arvin 2020.04.09  <b>CHECKED:</b>  <b>APPROVED:</b>	<b>KONNRA</b> 东莞市康瑞电子有限公司 DongGuan Konnra Electronics Co., Ltd.  PART NO. : H20060xxx0201F		
<b>MARK</b>	<b>REVISION DESCRIPTION</b>	<b>SIGNATURE</b>	<b>DATE</b>		<b>UNIT:</b> mm	<b>SCALE:</b> N/A	<b>SHEET:</b> 1/1	<b>PROJECTION:</b>	<b>REV. :</b> A1	<b>DRAWING NO. :</b> 2006H201-F-S
1	2	3	4	5	6	7	8	9		