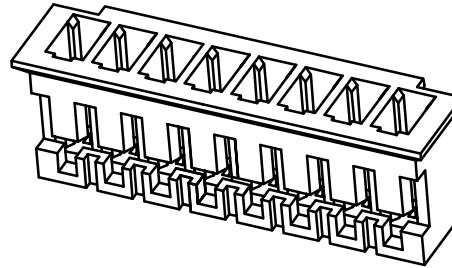
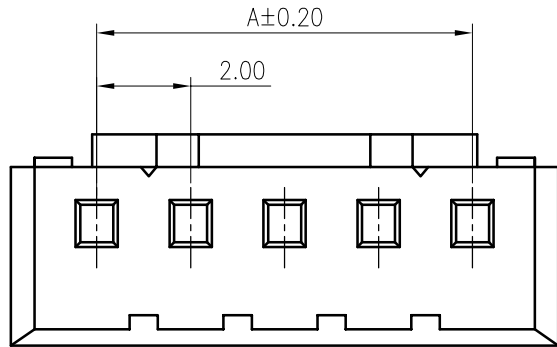


RoHS
COMPLIANT



SPECIFICATIONS

1. Current rating: 2A AC, DC
2. Voltage rating: 100V AC, DC
3. Temperature range: -40°C ~ +105°C
4. Insulation resistance: 1000MΩ/ min.
5. Withstanding voltage: 800V AC/ minute.
6. Contact resistance: 20mΩ/ max.

Material: PA66 UL94 V-0
Suitable KR2002 series terminal
Mate with KR2002 series wafer

Ordering Code:

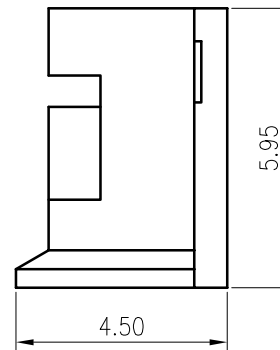
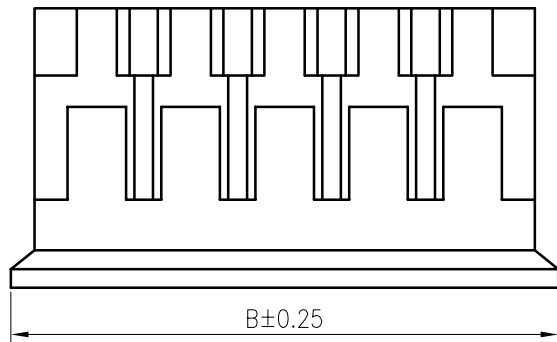
H20020 *** 01 01A

No. of Circuits

102:2,116:16

Insulator Material

17:PA66 Brown V0



Circuits	Dimensions		Circuits	Dimensions	
	A	B		A	B
02	2.00	5.60	10	18.00	21.60
03	4.00	7.60	11	20.00	23.60
04	6.00	9.60	12	22.00	25.60
05	8.00	11.60	13	24.00	27.60
06	10.00	13.60	14	26.00	29.60
07	12.00	15.60	15	28.00	31.60
08	14.00	17.60	16	30.00	33.60
09	16.00	19.60			

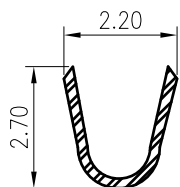
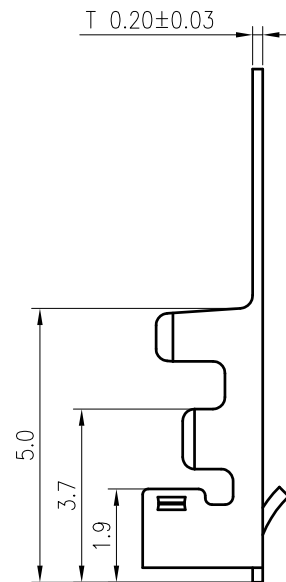
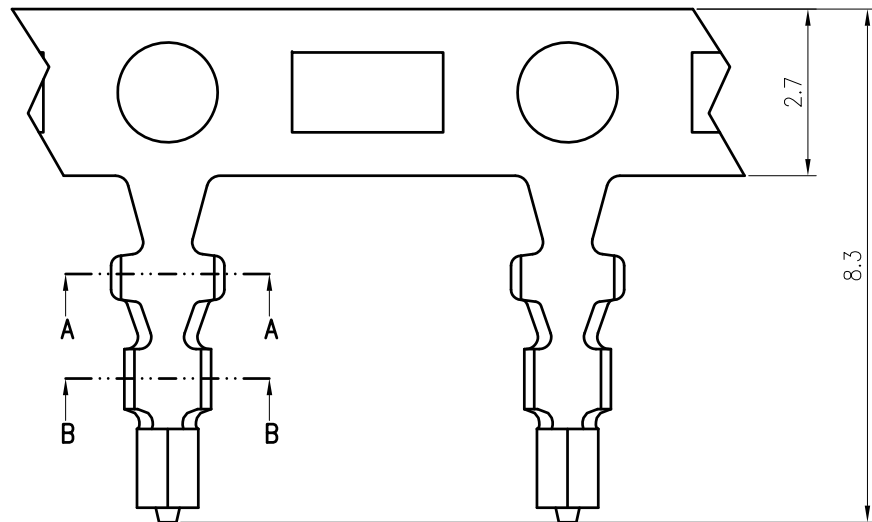
F					TOLERANCE X. X ±0.30 X. XX ±0.20 X. XXX ±0.10 Angle ±2°	TITLE: JAE2.0 Housing	DRAWN: Arvin 2020.05.04		KONNRA 东莞市康瑞电子有限公司 DongGuan Konnra Electronics Co., Ltd.		
							CHECKED:		PART NO. : H20020***1701A		
		Uniformly arrange the drawings	Arvin	2020.05.04			APPROVED:		REV. : A2 DRAWING NO. : 2002H101-A-S		
	MARK	REVISION DESCRIPTION	SIGNATURE	DATE			UNIT: mm	SCALE: N/A	SHEET: 1/1	PROJECTION	
	1	2	3	4	5	6	7	8	9		

RoHS
COMPLIANT

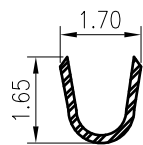
SPECIFICATIONS

1. Current rating: 2A AC, DC
2. Voltage rating: 100V AC, DC
3. Temperature range: -40°C ~ +105°C
4. Insulation resistance: 1000MΩ/ min.
5. Withstanding voltage: 800V AC/ minute.
6. Contact resistance: 20mΩ/ max.

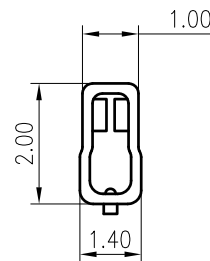
Material: Phosphor Bronze
Plating: Tin plated over nickel
Applicable wire :
 Conductor size: AWG#28~#22
 Insulation O.D.: 1.50mm Max.
Suitable KR2002 series housing
 Q'ty/Reel: 10,000 PCS



SECTION A-A



SECTION B-B



				TOLERANCE		TITLE:		DRAWN: <i>ZSZ 2021.09.08</i>		KONNRA 东莞市康瑞电子有限公司	
A3		Uniformly arrange the drawings		ZSZ		2021.09.08		X.X ±0.30		DongGuan Konnra Electronics Co.,Ltd.	
A2		Change the part number and frame format		Arvin		2020.05.04		X.XX ±0.20		APPROVED:	
MARK		REVISION DESCRIPTION		SIGNATURE		DATE		X.XXX ±0.10		PART NO.: T2002PT0101A	
						Angle ±2°		UNIT:mm		SCALE:N/A	
								SHEET: 1/1		PROJECTION	
								REV.: A3		DRAWING NO.: 2002T101-A-S	

RoHS
COMPLIANT

SPECIFICATIONS

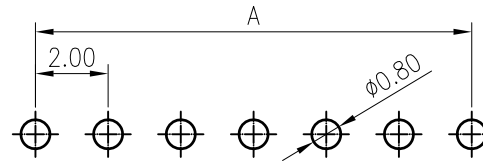
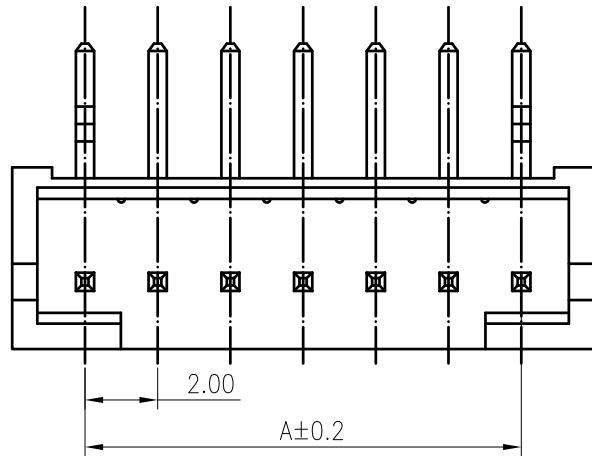
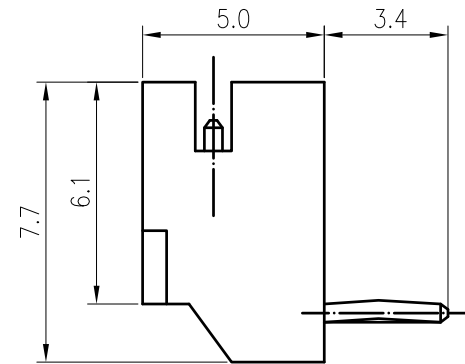
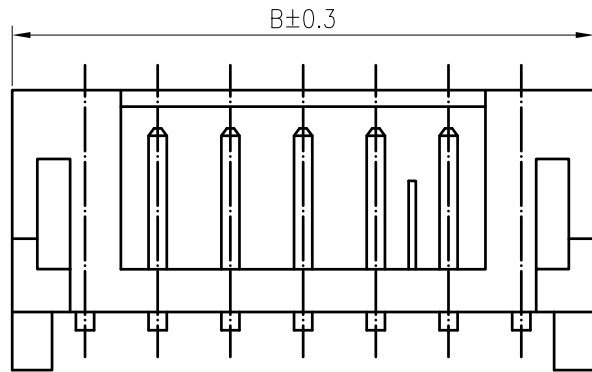
1. Current rating: 2A AC, DC
2. Voltage rating: 100V AC, DC
3. Temperature range: -40°C ~ +105°C
4. Insulation resistance: 1000MΩ/ min.
5. Withstanding voltage: 800V AC/ minute.
6. Contact resistance: 20mΩ/ max.

Material:

Insulator: PA66 UL 94V-0
 Contact: Brass
 Plating: Tin plated over Nickel
 Mate with KR2001 series Housing

Ordering Code:

C2002RD *** 17 T01 01PA
 No. of Circuits ——— Plating
 102:02, 116:16 ——— T01: Tin plated
 Insulator Material ———
 17: PA66 Brown V0



Recommended P.C.B. Layout
 Total tolerance: ±0.05mm

Circuits	Dimensions		Circuits	Dimensions	
	A	B		A	B
2	2.00	6.00	10	18.00	22.00
3	4.00	8.00	11	20.00	24.00
4	6.00	10.00	12	22.00	26.00
5	8.00	12.00	13	24.00	28.00
6	10.00	14.00	14	26.00	30.00
7	12.00	16.00	15	28.00	32.00
8	14.00	18.00	16	30.00	34.00
9	16.00	20.00			

F		Uniformly arrange the drawings	zsz	2021.09.08	TOLERANCE X.X ±0.30 X.XX ±0.20 X.XXX ±0.10 Angle ±2°	TITLE: JAE2.0 DIP 90° Wafer	DRAWN: zsz 2021.09.08	KONNRA 东莞市康瑞电子有限公司 DongGuan Konnra Electronics Co.,Ltd.		
		Change the part number and frame format	Arvin	2020.05.04			CHECKED:			
	MARK	REVISION DESCRIPTION	SIGNATURE	DATE			APPROVED:		PART NO.: C2002RD***17T0101PA	
	1	2	3	4	UNIT:mm	SCALE:N/A	SHEET:1/1	PROJECTION	VER.:A3	DRAWING NO.:2002WRD101-A-S

RoHS
COMPLIANT

SPECIFICATIONS

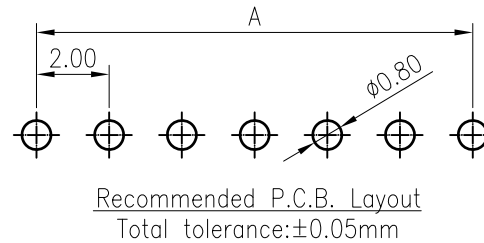
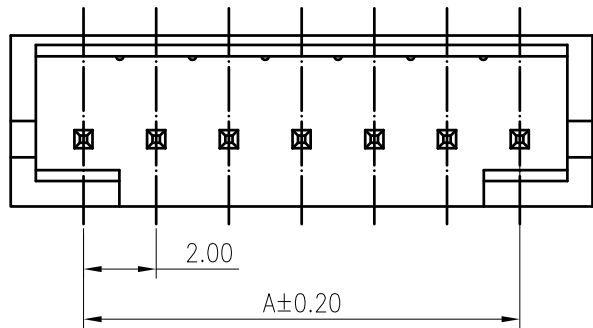
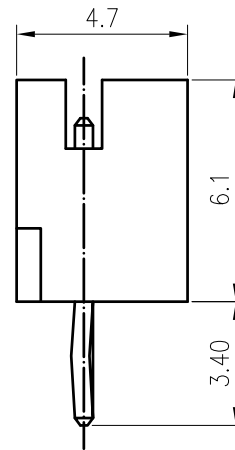
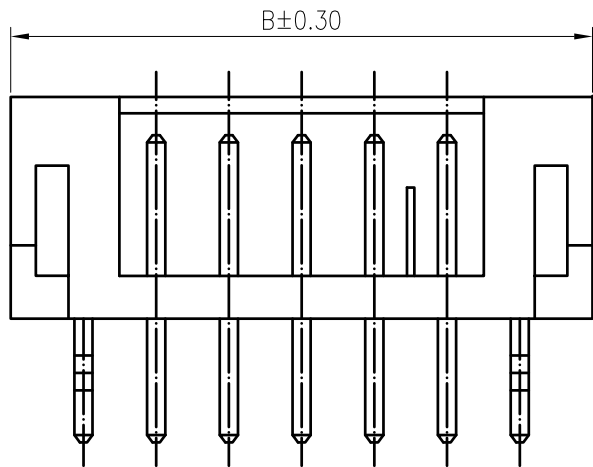
1. Current rating: 2A AC, DC
2. Voltage rating: 100V AC, DC
3. Temperature range: -40°C ~ +105°C
4. Insulation resistance: 1000MΩ/ min.
5. Withstanding voltage: 800V AC/ minute.
6. Contact resistance: 20mΩ/ max.

Material:

Insulator: PA66 UL 94V-0
Contact: Brass
Plating: Tin plated over Nickel
Mate with KR2001 series Housing

Ordering Code:

C2002VD *** 17 T01 01PA
No. of Circuits | Plating
102:02, 116:16 | T01: Tin plated
Insulator Material
17: PA66 Brown V0



Circuits	Dimensions		Circuits	Dimensions	
	A	B		A	B
2	2.00	6.00	10	18.00	22.00
3	4.00	8.00	11	20.00	24.00
4	6.00	10.00	12	22.00	26.00
5	8.00	12.00	13	24.00	28.00
6	10.00	14.00	14	26.00	30.00
7	12.00	16.00	15	28.00	32.00
8	14.00	18.00	16	30.00	34.00
9	16.00	20.00			

MARK	REVISION DESCRIPTION	SIGNATURE	DATE	TOLERANCE	TITLE:	DRAWN:	CHECKED:	APPROVED:	VER.:	DRAWING NO.:
A3	Uniformly arrange the drawings	ZSZ	2021.09.08	X.X ±0.30	JAE2.0 DIP 180°	ZSZ 2021.09.08			A3	2002WVD101-A-S
A2	Change the part number and frame format	Arvin	2020.05.04	X.XX ±0.20	Wafer					
				X.XXX ±0.10						
				Angle ±2°						

KONNRA 东莞市康瑞电子有限公司
DongGuan Konnra Electronics Co.,Ltd.

PART NO.: C2002VD***17T0101PA

SHEET: 1/1 PROJECTION VER.: A3 DRAWING NO.: 2002WVD101-A-S