

RoHS
COMPLIANT

SPECIFICATIONS

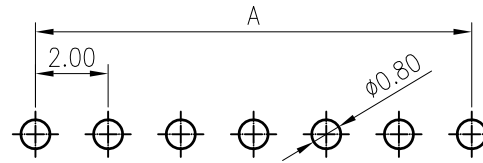
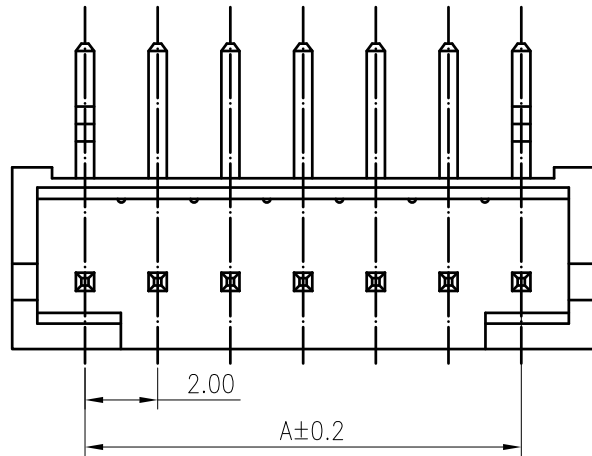
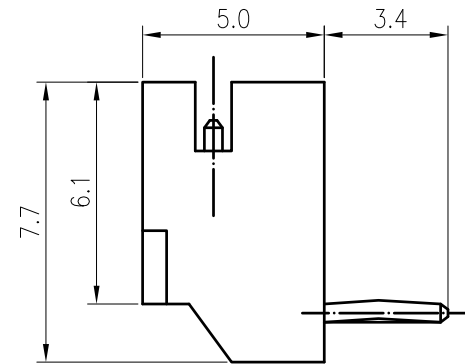
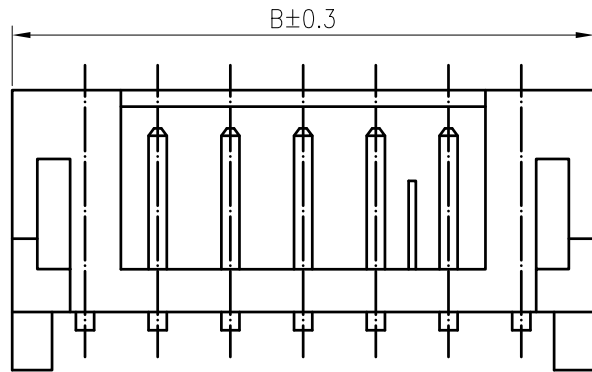
1. Current rating: 2A AC, DC
2. Voltage rating: 100V AC, DC
3. Temperature range: -40°C ~ +105°C
4. Insulation resistance: 1000MΩ/ min.
5. Withstanding voltage: 800V AC/ minute.
6. Contact resistance: 20mΩ/ max.

Material:

Insulator: PA66 UL 94V-0
 Contact: Brass
 Plating: Tin plated over Nickel
 Mate with KR2001 series Housing

Ordering Code:

C2002RD *** 17 T01 01PA
 No. of Circuits ——— Plating
 102:02, 116:16 ——— T01: Tin plated
 Insulator Material ———
 17: PA66 Brown V0



Recommended P.C.B. Layout
 Total tolerance: ±0.05mm

Circuits	Dimensions		Circuits	Dimensions	
	A	B		A	B
2	2.00	6.00	10	18.00	22.00
3	4.00	8.00	11	20.00	24.00
4	6.00	10.00	12	22.00	26.00
5	8.00	12.00	13	24.00	28.00
6	10.00	14.00	14	26.00	30.00
7	12.00	16.00	15	28.00	32.00
8	14.00	18.00	16	30.00	34.00
9	16.00	20.00			

F		Uniformly arrange the drawings	zsz	2021.09.08	TOLERANCE X.X ±0.30 X.XX ±0.20 X.XXX ±0.10 Angle ±2°	TITLE: JAE2.0 DIP 90° Wafer	DRAWN: zsz 2021.09.08	KONNRA 东莞市康瑞电子有限公司 DongGuan Konnra Electronics Co.,Ltd.		
		Change the part number and frame format	Arvin	2020.05.04			CHECKED:			
	MARK	REVISION DESCRIPTION	SIGNATURE	DATE			APPROVED:		PART NO.: C2002RD***17T0101PA	
	1	2	3	4	UNIT:mm	SCALE:N/A	SHEET:1/1	PROJECTION	VER.:A3	DRAWING NO.:2002WRD101-A-S