


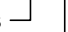
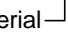
RoHS  
COMPLIANT

SPECIFICATIONS

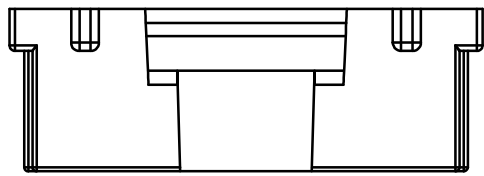
1. Current rating: 1A AC, DC
2. Voltage rating: 150V AC,DC
3. Temperature range: -40°C ~ +105°C
4. Insulation resistance: 500MΩ Min.
5. Withstanding voltage: 500V AC/ minute.
6. Contact resistance: 30m Ω Max.

Material: PA66 UL 94V-0  
Suitable KR1258 series terminal  
Mate with KR1258 series wafer  
Ordering Code:

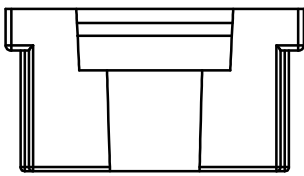
 H12580 \*\*\* 01 01B

No. of Circuits   
102:2,118:18  
Insulator Material   
01:PA66 White V0

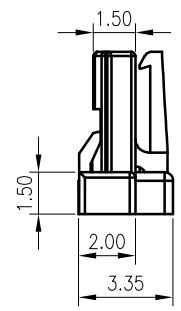
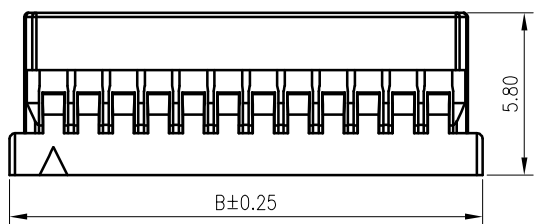
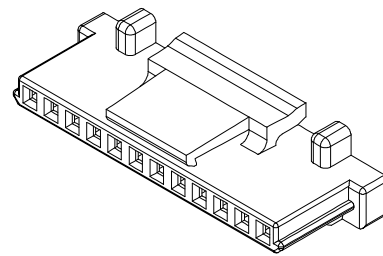
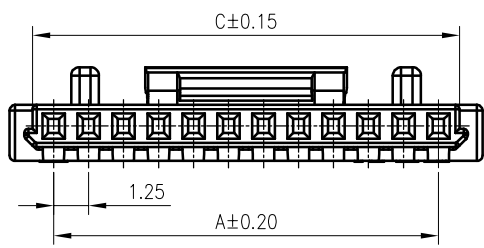
Circuits	Dimension		
	A	B	C
2	1.25	4.40	2.75
3	2.50	5.65	4.00
4	3.75	6.90	5.25
5	5.00	8.15	6.50
6	6.25	9.40	7.75
7	7.50	10.65	9.00
8	8.75	11.90	10.25
9	10.00	13.15	11.50
10	11.25	14.40	12.75
11	12.50	15.65	14.00
12	13.75	16.90	15.25
13	15.00	18.15	16.50
14	16.25	19.40	17.75
15	17.50	20.65	19.00
20	23.75	26.90	25.25
25	30.00	33.15	31.50
30	36.25	39.40	37.75




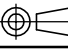


11-30P

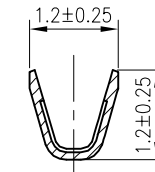
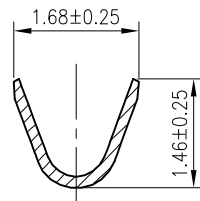
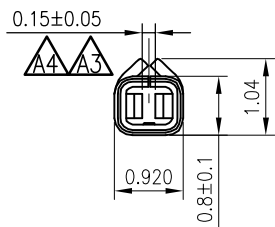
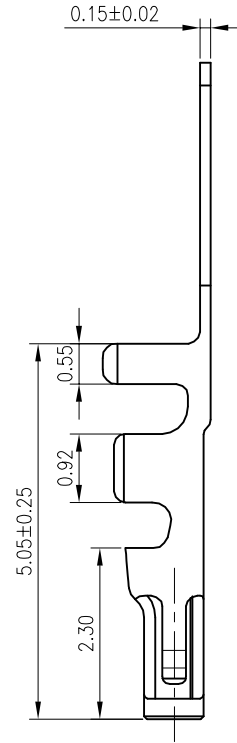
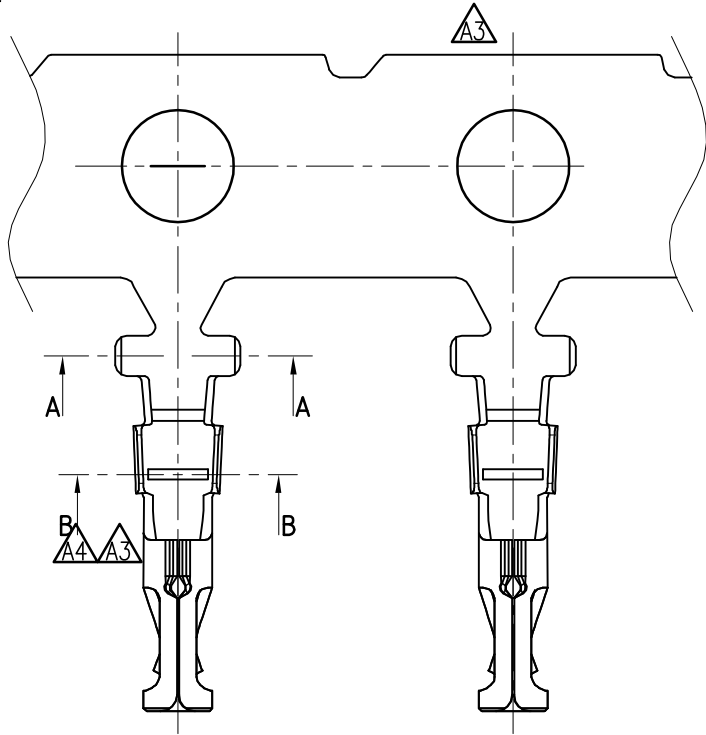


2-10P



F					TOLERANCE X. X ± 0.30 X. XX ± 0.20 X. XXX ± 0.10 Angle ± 2°	TITLE: DF14 Have buckle Housing	DRAWN: Liujiangtian 2020.04.24		KONNRA 东莞市康瑞电子有限公司 DongGuan Konnra Electronics Co., Ltd.		
		Change the part number	Arvin	2020.11.25			CHECKED:				
		Change the part number and frame format	LJT	2020.04.24			APPROVED:		PART NO. : H12580***0101B		
	MARK	REVISION DESCRIPTION	SIGNATURE	DATE			UNIT: mm	SCALE: N/A	SHEET: 1/1	PROJECTION 	REV. : A3

RoHS  
COMPLIANT



SECTION:A-A

SECTION:B-B

SPECIFICATIONS

1. Current rating: 1A AC, DC
2. Voltage rating: 150V AC,DC
3. Temperature range: -40°C ~ +105°C
4. Insulation resistance: 500MΩ Min.
5. Withstanding voltage: 500V AC/ minute.
6. Contact resistance: 30mΩ Max.

Applicable Wires:

AWG#28~#32

Insulation O.D. : 0.90mm MAX

Material: Phosphor Bronze

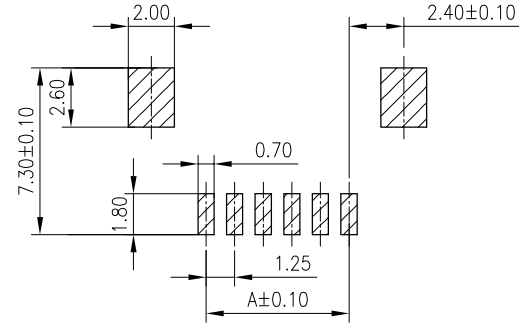
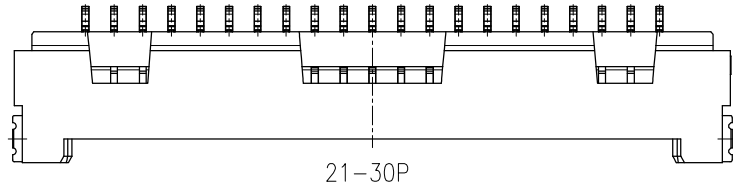
Plating: Tin plated over nickel

Suitable KR1258 series housing

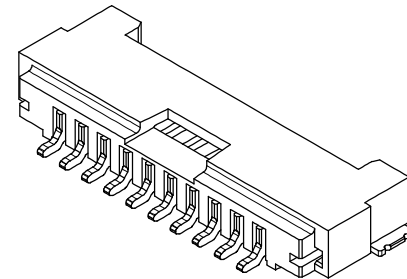
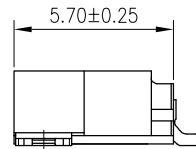
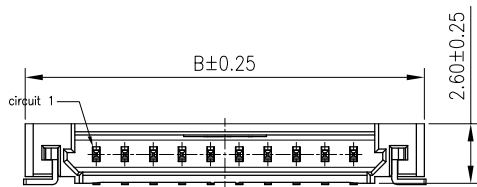
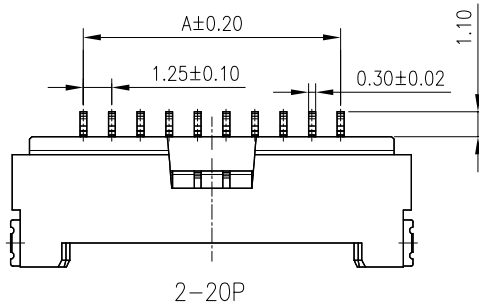
Q'ty/Reel: 15,000 PCS

F					TOLERANCE X. X ±0.30 X. XX ±0.20 X. XXX ±0.10 Angle ±2°	TITLE: DF14 Have buckle Terminal	DRAWN: Liujingtian 2020.4.24		KONNRA 东莞市康瑞电子有限公司 DongGuan Konnra Electronics Co., Ltd.		
		Correct view	Arvin	2022.01.20			CHECKED:				
		Correct view and Modify Dimension	Arvin	2020.07.08			APPROVED:		PART NO. : T1258OPT0101B		
	MARK	REVISION DESCRIPTION	SIGNATURE	DATE			UNIT: mm	SCALE: N/A	SHEET: 1/1	PROJECTION	REV. : A4
	1	2	3	4	5	6	7	8	9		

RoHS  
COMPLIANT



Recommended P.C.B. Layout  
Total tolerance: ±0.05mm



SPECIFICATIONS

1. Current rating: 1A AC, DC
2. Voltage rating: 150V AC, DC
3. Temperature range: -40°C ~ +105°C
4. Insulation resistance: 500MΩ Min.
5. Withstanding voltage: 500V AC/ minute.
6. Contact resistance: 30m Ω Max.

Material:

Insulator: Nylon 6T UL 94V-0

Contact: Brass

Plating: Tin plated over Nickel

Mate with KR1258 series Housing

Ordering Code:

C1258RS \*\*\* 09 M01 01 RB

No. of Circuits  102:2,130:30

Plating:  
M01:Matte tin plated  
G01:Gold flash

Circuits	Dimensions	
	A	B
2	1.25	7.45
3	2.50	8.70
4	3.75	9.95
5	5.00	11.20
6	6.25	12.45
7	7.50	13.70
8	8.75	14.95
9	10.00	16.20
10	11.25	17.45
11	12.50	18.70
12	13.75	19.95
13	15.00	21.20
14	16.25	22.45
15	17.50	23.70
20	23.75	29.95
25	30.00	36.20
30	36.25	42.45



MARK

1

2

3

4

5

6

7

8

9

TOLERANCE

X. X ±0.30  
X. XX ±0.20  
X. XXX ±0.10  
Angle ±2°

TITLE:

DF14 Have buckle SMT  
90° Wafer

UNIT: mm

SCALE: N/A

DRAWN: Arvin 2020.07.07

CHECKED:

APPROVED:

SHEET: 1/1

PROJECTION

KONNRA 东莞市康瑞电子有限公司

DongGuan Konnra Electronics Co., Ltd.

PART NO. : C1258RS\*\*\*09\*\*\*01RB

REV. : A1

DRAWING NO. : 1258WRS101-B-S