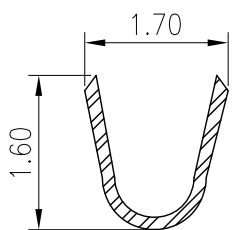
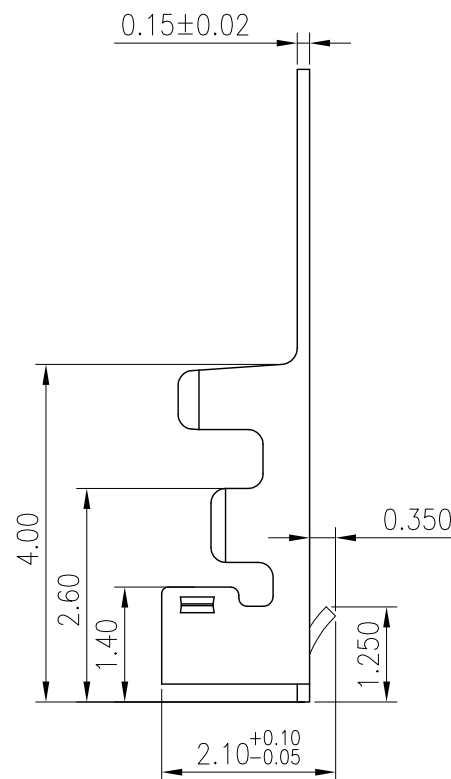
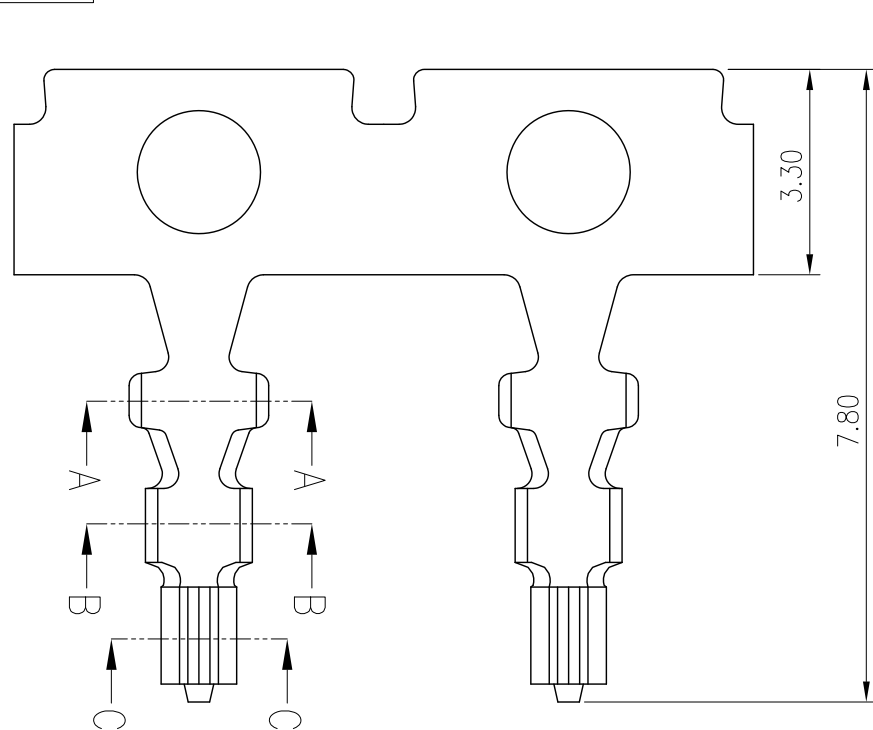
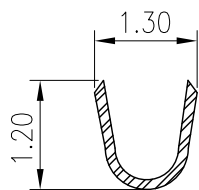


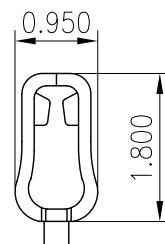
RoHS
COMPLIANT



SECTION A-A



SECTION B-B



SECTION C-C

SPECIFICATIONS

1. Current rating: 3A AC, DC
2. Voltage rating: 250V AC, DC
3. Temperature range: -40°C ~ +105°C
4. Insulation resistance: 1000MΩ/ min.
5. Withstanding voltage: 1000V AC/ minute.
6. Contact resistance: 20mΩ/ max.

Material: Phosphor Bronze

Plating: Tin plated over nickel

Applicable wire :

Conductor size: AWG#28~#32

Insulation O.D.: 1.00mm Max.

Suitable KR1254 series housing

Q'ty/Reel: 10,000 PCS

MARK	REVISION DESCRIPTION	SIGNATURE	DATE	TOLERANCE	TITLE:	DRAWN:	CHECKED:	APPROVED:	REV.:	DRAWING NO.:
A5	Uniformly arrange the drawings	Shen	2021.08.30	X.X ±0.30	JAE 1.25 Terminal	Shen 2021.08.30			A5	KONNRA 东莞市康瑞电子有限公司 DongGuan Konnra Electronics Co.,Ltd. PART NO.: T12540PT0101A DRAWING NO.: 1254T101-A-S
A4	Change the part number and frame format	Arvin	2020.04.10	X.XX ±0.20						
				X.XXX ±0.10						
				Angle ±2°	UNIT:mm	SCALE: 1/1	SHEET: 1/1	PROJECTION		