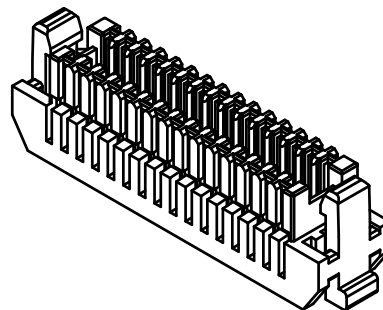
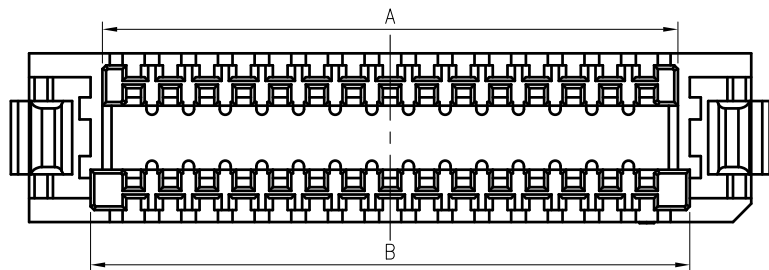


RoHS
COMPLIANT



SPECIFICATIONS

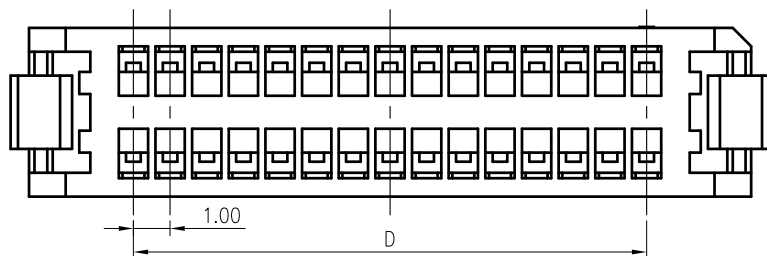
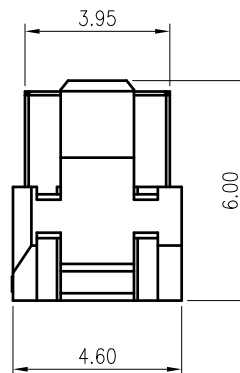
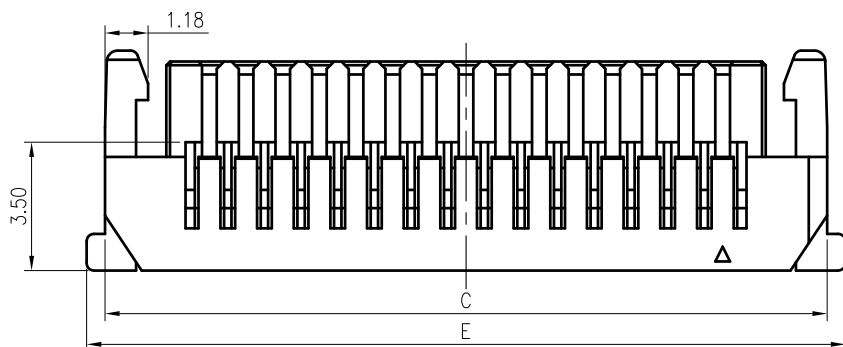
1. Current rating: 1A AC, DC
2. Voltage rating: 50V AC,DC
3. Temperature range: -40°C ~ +105°C
4. Insulation resistance: 500MΩ/ min.
5. Withstanding voltage: 300V AC/ minute.
6. Contact resistance: 55mΩ/ max.

Material: PA66 UL 94V-0
 Suitable: KR1007 series terminal
 Mate with KR1007 series wafer
 Ordering Code:

H10070 *** 01 01A

No. of Circuits
 203:2x3,225:2x25

Insulator Material
 01:PA66 White V0
 02:PA66 Black V0



Circuits	Dimensions				
	A	B	C	D	E
2x3	3.70	4.35	7.70	2.00	8.70
2x5	5.70	6.35	9.70	4.00	10.70
2x6	6.70	7.35	10.70	5.00	11.70
2x10	10.70	11.35	14.70	9.00	15.70
2x15	15.70	16.35	19.70	14.00	20.70
2x20	20.70	21.35	24.70	19.00	25.70
2x25	25.70	26.35	29.70	24.00	30.70



MARK

REVISION DESCRIPTION

SIGNATURE

DATE

TOLERANCE
 X.X ±0.30
 X.XX ±0.20
 X.XXX ±0.10
 Angle ±2°

TITLE:
 SHLD1.0 Housing

UNIT:mm SCALE:N/A

DRAWN: *Arwin 2020.09.02*

CHECKED:

APPROVED:

SHEET:1/1

PROJECTION

KONNRA 东莞市康瑞电子有限公司
 DongGuan Konnra Electronics Co.,Ltd.

PART NO.:H10070****01A

REV.:A1 DRAWING NO.:1007H201-A-S

1

2

3

4

5

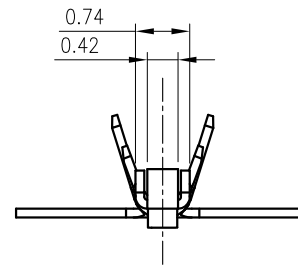
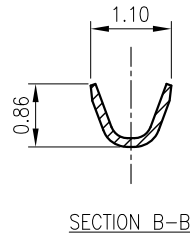
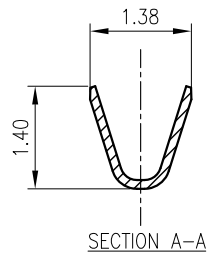
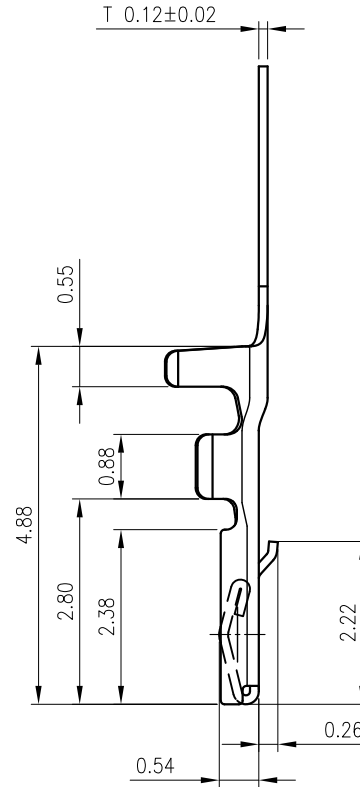
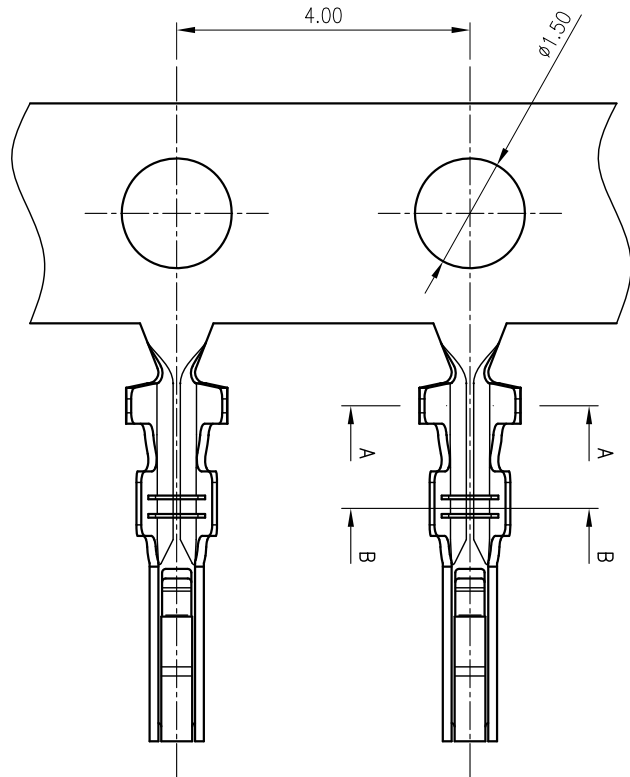
6

7

8

9

RoHS
COMPLIANT



SPECIFICATIONS

1. Current rating: 1A AC, DC
2. Voltage rating: 50V AC,DC
3. Temperature range: -40°C ~ +105°C
4. Insulation resistance: 500MΩ/ min.
5. Withstanding voltage: 300V AC/ minute.
6. Contact resistance: 55mΩ/ max.

Material: Phosphor Bronze

Finish: Gold flash or matte tin plated over Nickel

Applicable wires: AWG #28~#32

Insulation O.D 0.4 to 0.8mm

Suitable: KR1007 series Housing

Qty/reel: 15,000 PCS

Ordering Code:

T10070P G01 01A

└ M01:Matte tin plated

G01:Gold flash

TOLERANCE

X.X ±0.3

X.XX ±0.2

X.XXX ±0.1

Angle ±2°

TITLE:

SHLD1.0 Terminal

DRAWN: *Arwin 2021.08.25*

CHECKED: *Shen 2021.08.25*

APPROVED:

KONNRA 东莞市康瑞电子有限公司

DongGuan Konnra Electronics Co.,Ltd.

PART NO.: T10070P***01A



Uniformly arrange the drawings

Shen

2021.08.25

MARK

REVISION DESCRIPTION

SIGNATURE

DATE

UNIT: mm

SCALE: 1/1

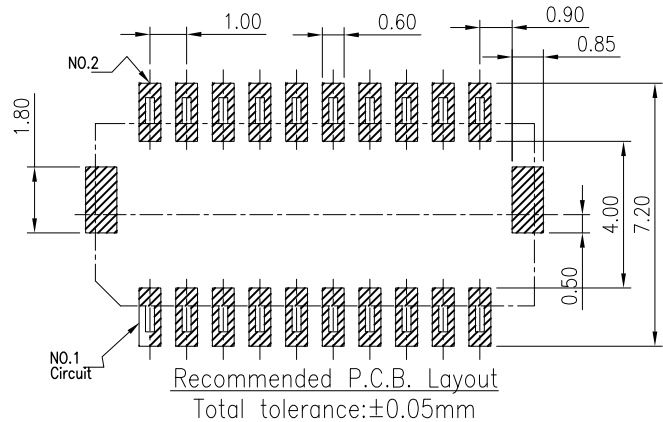
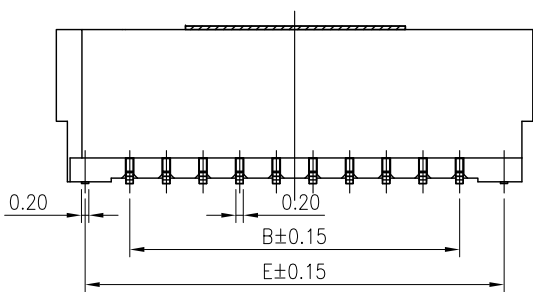
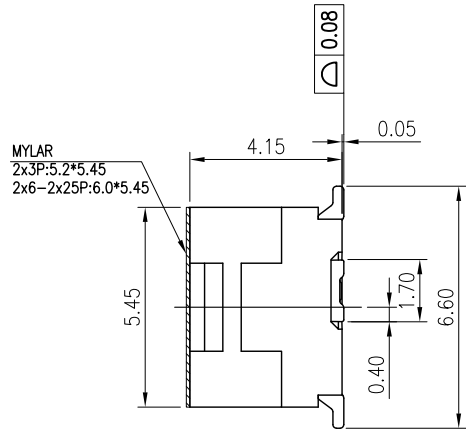
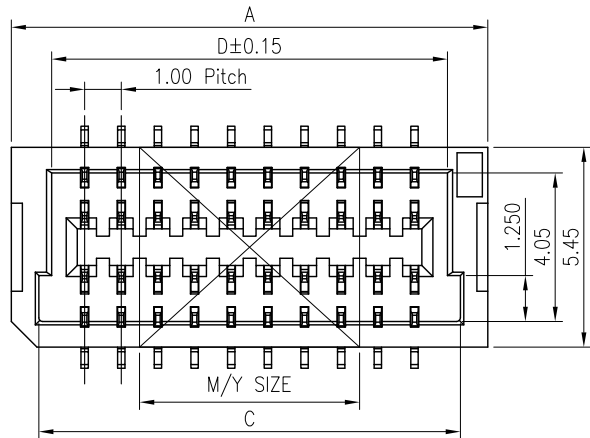
SHEET: 1/1

PROJECTION

REV.: A2

DRAWING NO.: 1007T101-A-Q

RoHS
COMPLIANT



SPECIFICATIONS

1. Current rating: 1A AC, DC
2. Voltage rating: 50V AC,DC
3. Temperature range: -40°C ~ +105°C
4. Insulation resistance: 500MΩ/ min.
5. Withstanding voltage: 300V AC/ minute.
6. Contact resistance: 55mΩ/ max.

Material:

Insulator: LCP UL 94V-0
 Contact: Copper alloy
 Solder Nail: Copper alloy
 Plating: Gold flash or matte tin plated over Nickel
 Mate with KR1007 series housing

Ordering Code:

C1007VS *** ** *** 01 * A
 No.of Circuits ———— Packing
 203:2x3,225:2x25 ———— T:Tube
 Insulator Material ———— R:Tape&Reel
 13:LCP Natural ———— Plating
 14:LCP Black ———— M01: Matte tin plated
 G01:Gold flash

Circuits	Dimensions				
	A	B	C	D	E
2x3	6.00	2.00	4.5	3.80	4.43
2x5	8.00	4.00	6.5	5.80	6.43
2x6	9.00	5.00	7.5	6.80	7.43
2x10	13.00	9.00	11.5	10.80	11.43
2x15	18.00	14.00	16.5	15.80	16.43
2x20	23.00	19.00	21.5	20.80	21.43
2x25	28.00	24.00	26.5	25.80	26.43

TOLERANCE	X.X ±0.30
	X.XX ±0.20
	X.XXX ±0.10
	Angle ±2°

TITLE: SHLD1.0 SMT 180°
 Wafer

DRAWN: *Arwin 2021.08.25*
 CHECKED: *Shen 2021.08.25*
 APPROVED:
 UNIT:mm SCALE:1/1 SHEET:1/1 PROJECTION

KONNRA 东莞市康瑞电子有限公司
 DongGuan Konnra Electronics Co.,Ltd.
 PART NO.:C1007VS*****01*A
 REV.:A2 DRAWING NO.:1007WVS201-A-S

MARK	REVISION DESCRIPTION	SIGNATURE	DATE
△	Uniformly arrange the drawings	Shen	2021.08.25